

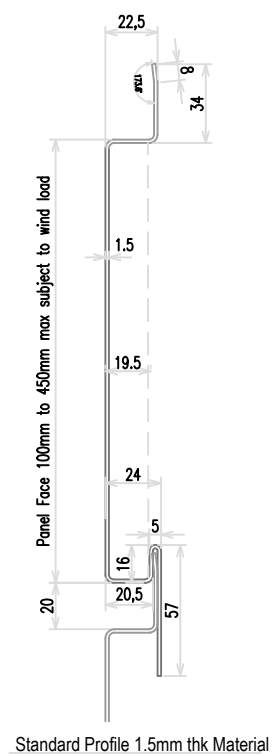
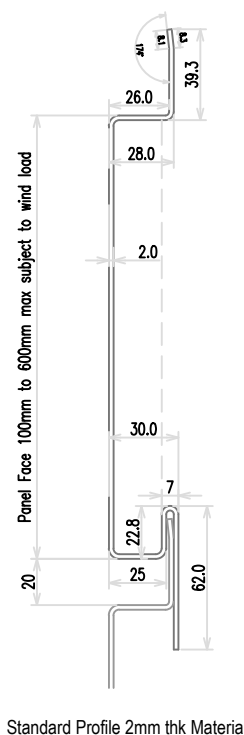
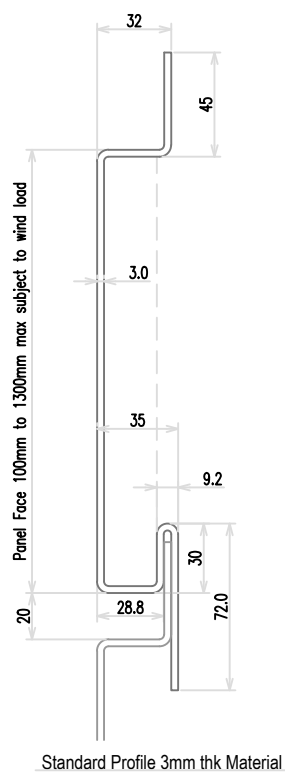
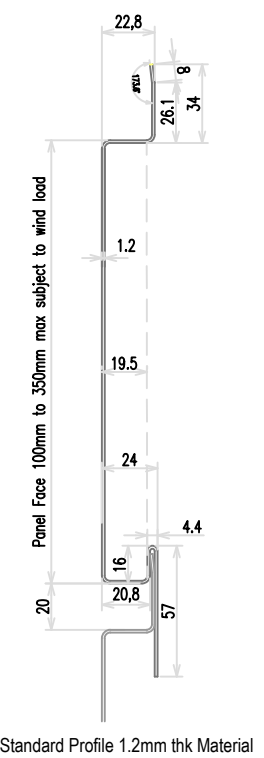
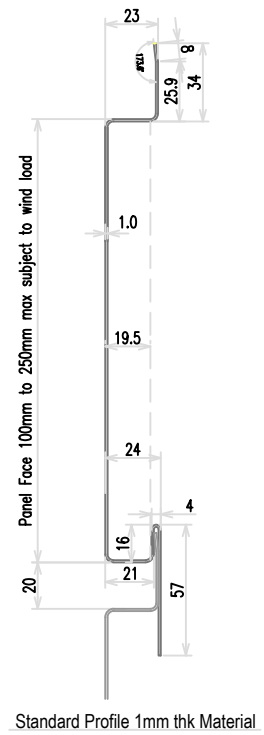
CGL Facades

Rear-Ventilated Horizontal WallPlank System

1mm to 3mm thick Sheet Metal

Contents

- WP-H-00 - System Contents
- WP-H-01 - Range of Bracket System
- WP-H-02 - Cladding Detail Locations
- WP-H-03 - Section at Vertical Joint
- WP-H-04 - Section at Horizontal Joint
- WP-H-05 - Deflection Joint at Floor Slab (including Fire-Stop)
- WP-H-06 - Section thro' Vertical Expansion Joint
- WP-H-07 - Section at Base of Cladding
- WP-H-08 - Section at Head of Cladding
- WP-H-09 - Vertical Section thro' Window
- WP-H-10 - Window Jamb Detail
- WP-H-11 - External Corner
- WP-H-12 - Internal Corner



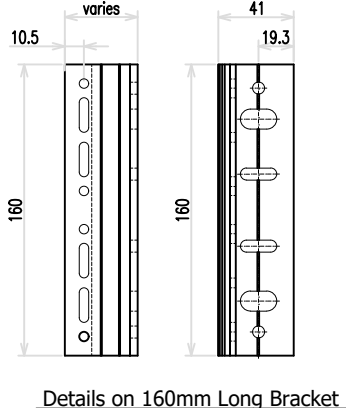
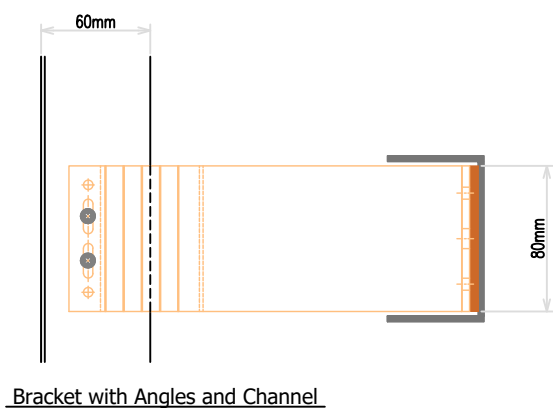
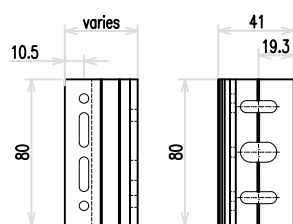
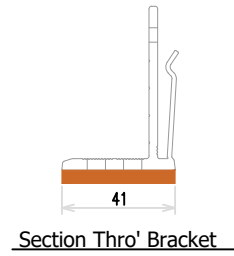
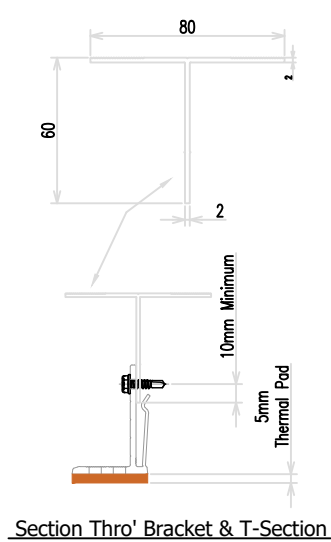
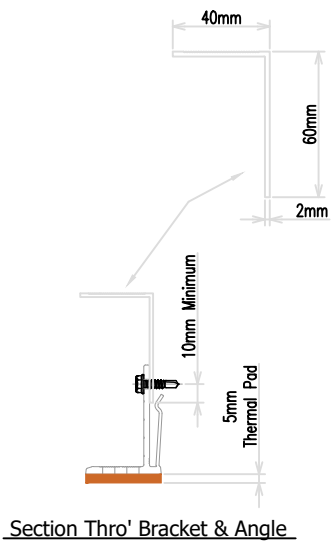
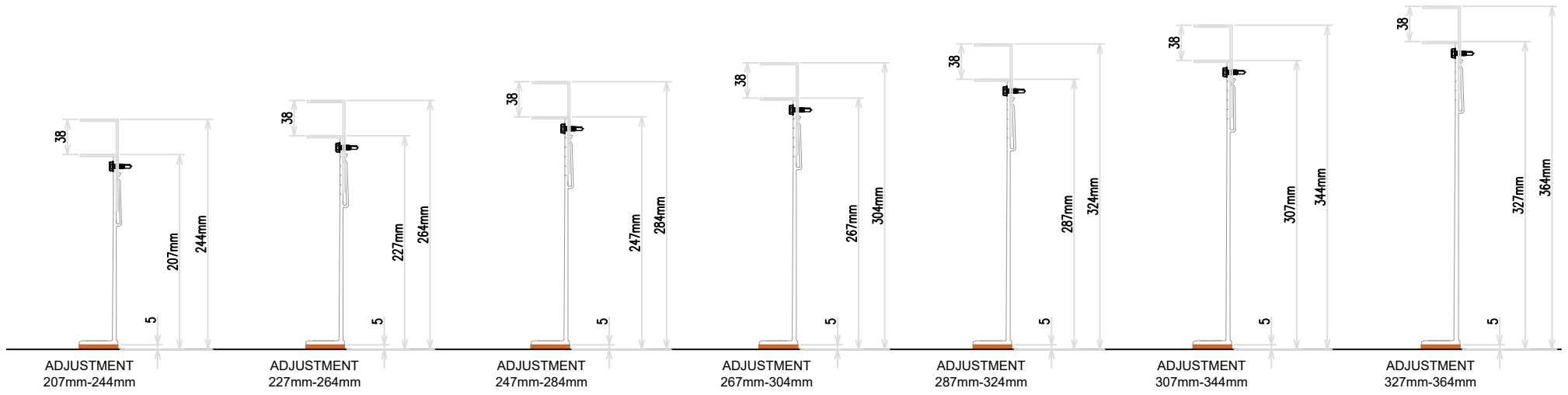
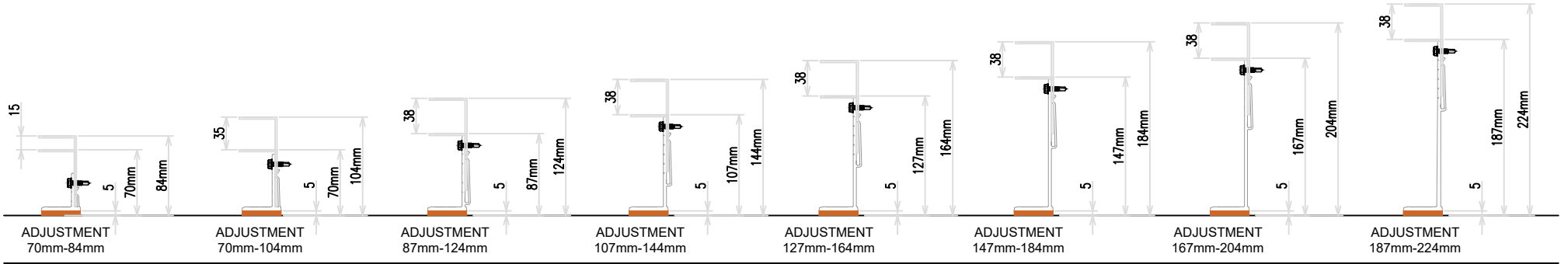
2 Young Place
Kelvin Industrial Estate
Glasgow
G75 0TD

sales@cglfacades.com
tel: 01355 243 021

System
Rear-Ventilated Facade
Horizontal WallPlank System (1mm to 1.5mm thick Metal)

Drawing No	Description	Revision	Scale		
WP-H-00	System Contents Page	-	-		
Drawn by	Rev	Description	Date	By	Date
SW					Oct 2024

RANGE OF BRACKET SYSTEM



BRACKETS	Adjustment range for each bracket (mm)	
EP - 40	from 70	to 84
EP - 60	from 70	to 104
EP - 80	from 87	to 124
EP - 100	from 107	to 144
EP - 120	from 127	to 164
EP - 140	from 147	to 184
EP - 160	from 167	to 204
EP - 180	from 187	to 224
EP - 200	from 207	to 244
EP - 220	from 227	to 264
EP - 240	from 247	to 284
EP - 260	from 267	to 304
EP - 280	from 287	to 324
EP - 300	from 307	to 344
EP - 320	from 327	to 364
NOTE: - BASED ON 60 x 40mm ANGLE SECTIONS DIMENSION RANGES DOES INCLUDE FOR 5mm THERMAL PADS		

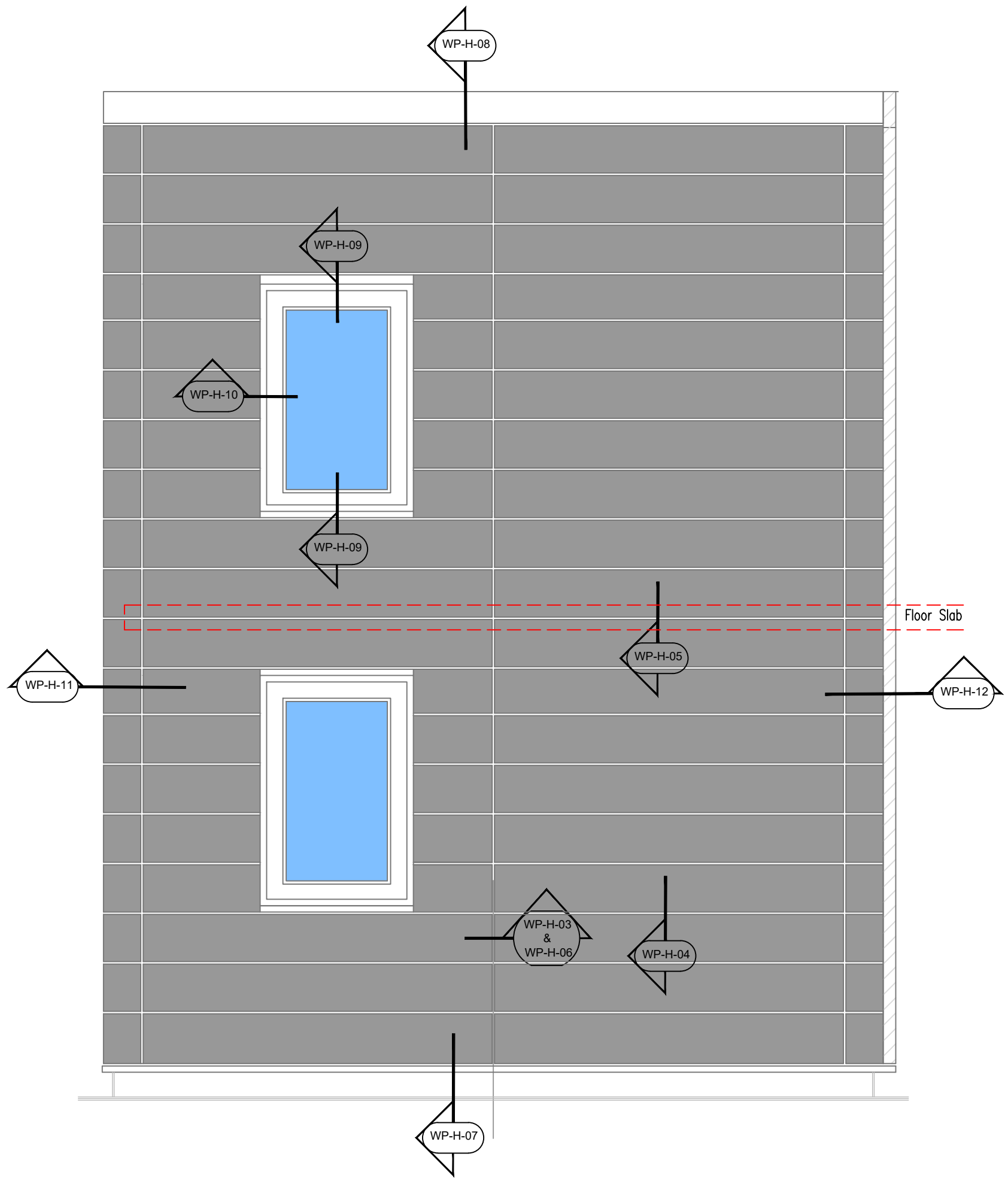


2 Young Place
Kelvin Industrial Estate
Glasgow
G75 0TD

sales@cglfacades.com
tel: 01355 243 021

System
Rear-Ventilated Facade
Horizontal WallPlank System (1mm to 3mm thick Metal)

Drawing No	Description	Revision	Scale		
WP-H-01	Range of Bracket System	-	-		
Drawn by	Rev	Description	Date	By	Date
SW					Oct 2024



Elevation on Cladding

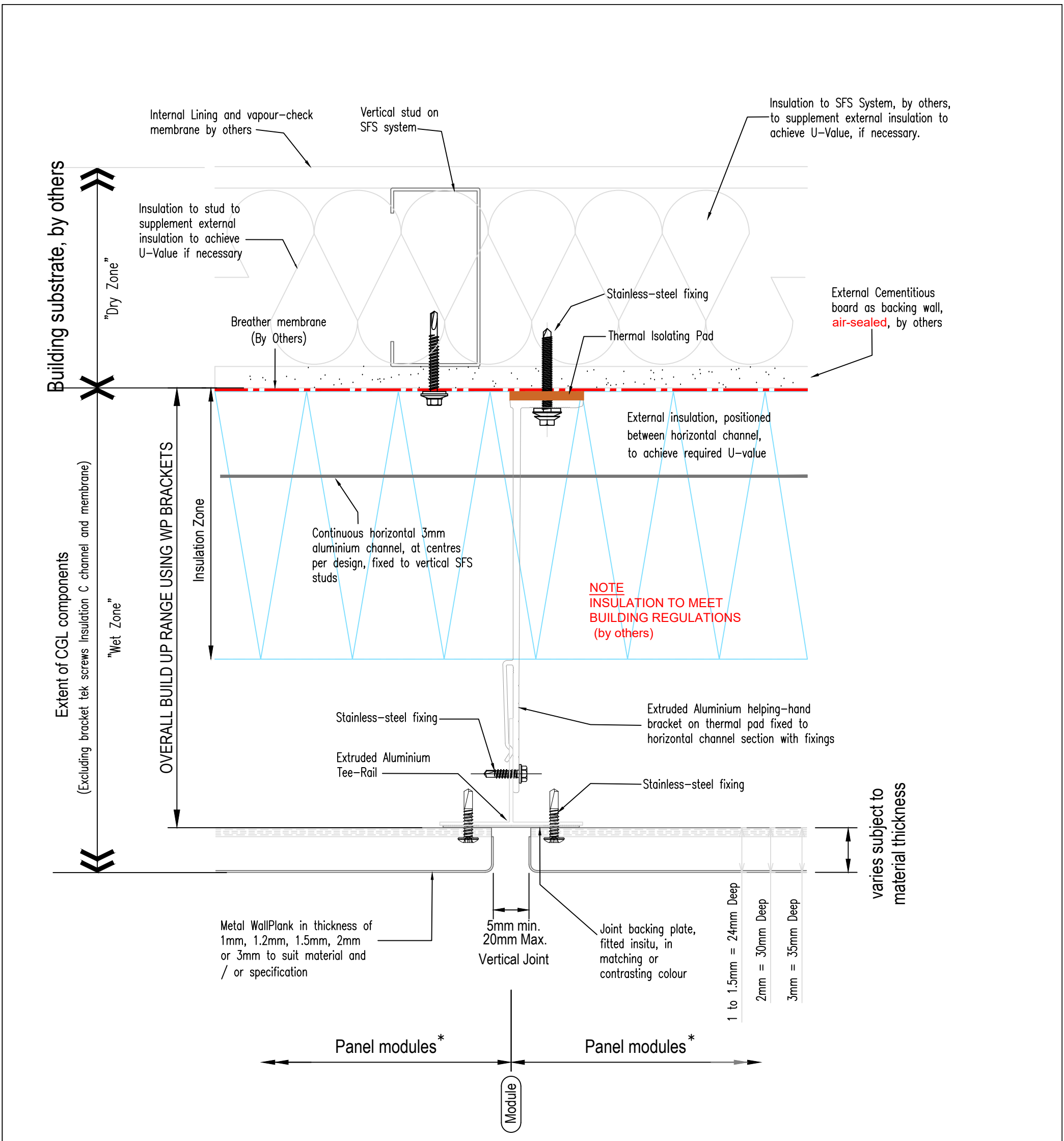


2 Young Place
Kelvin Industrial Estate
Glasgow
G75 0TD

sales@cglfacades.com
tel: 01355 243 021

System
Rear-Ventilated Facade
Horizontal WallPlank System (1mm to 3mm thick Metal)

Drawing No	Description			Revision	Scale
WP-H-02	Cladding Detail Locations			-	-
Drawn by	Rev	Description	Date	By	Date
SW					Oct 2024



Notes:

- * For panel module parameters refer to "Systems Overview" document.
- Factory punched slots or site oversized holes should be applied in accordance with MCRMA GD 26
- ALUMINIUM FABRICATIONS: A GUIDE TO GOOD PRACTICE.
- Non CGL components are indicative and subject to contractors project specification

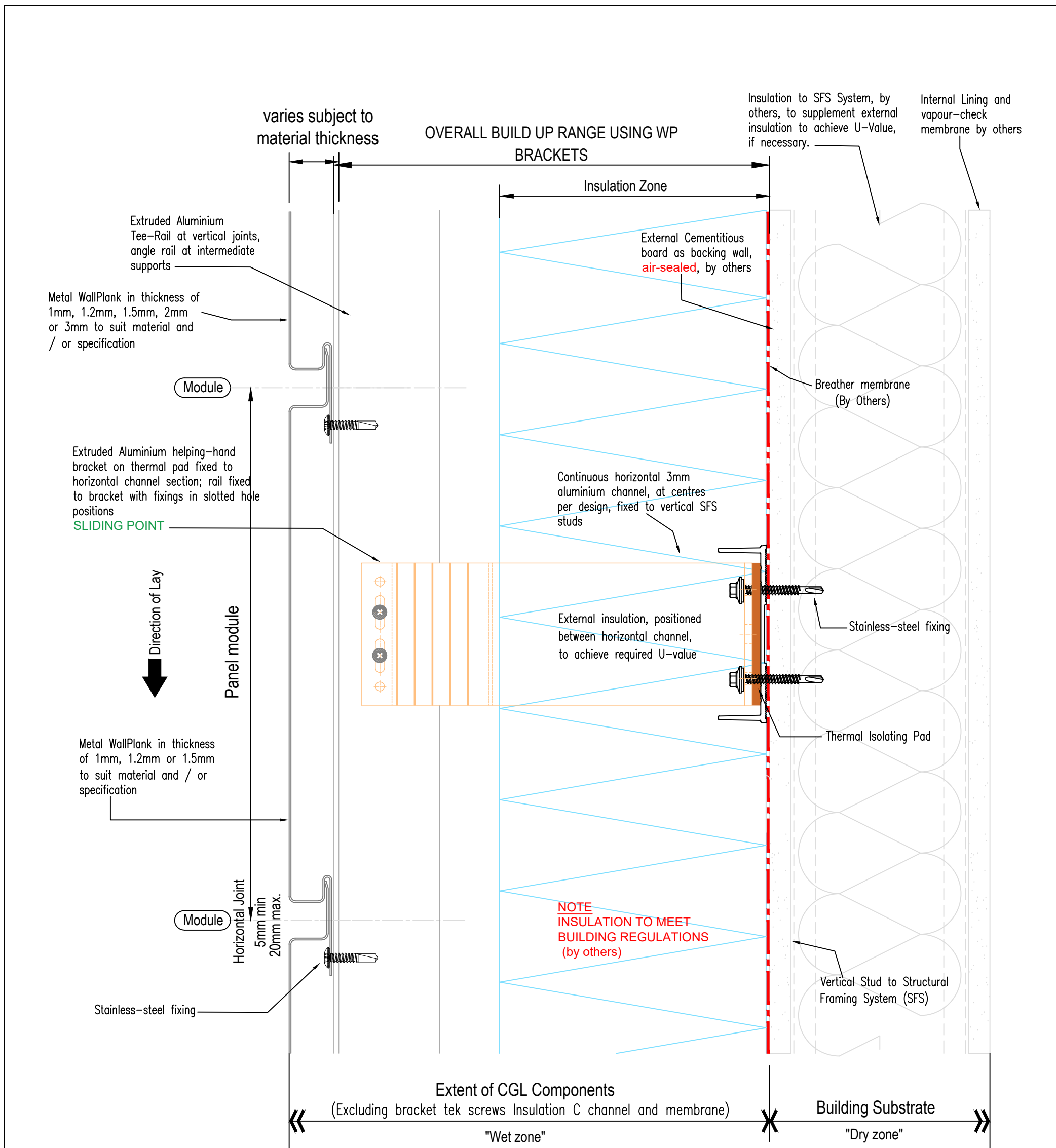


2 Young Place
Kelvin Industrial Estate
Glasgow
G75 0TD

sales@cglfacades.com
tel: 01355 243 021

System
**Rear-Ventilated Facade
Horizontal WallPlank System (1mm to 3mm thick Metal)**

Drawing No WP-H-03	Description Section at Vertical Joint	Revision -	Scale 1:2 @ A3
Drawn by SW	Rev	Description	Date
			By
			Date Oct 2024



Notes:

Factory punched slots or site oversized holes should be applied in accordance with MCRMA GD 26 ALUMINIUM FABRICATIONS: A GUIDE TO GOOD PRACTICE.
 Non CGL components are indicative and subject to contractors project specification

Grid system is multifunctional and movement is reviewed on a project-specific basis

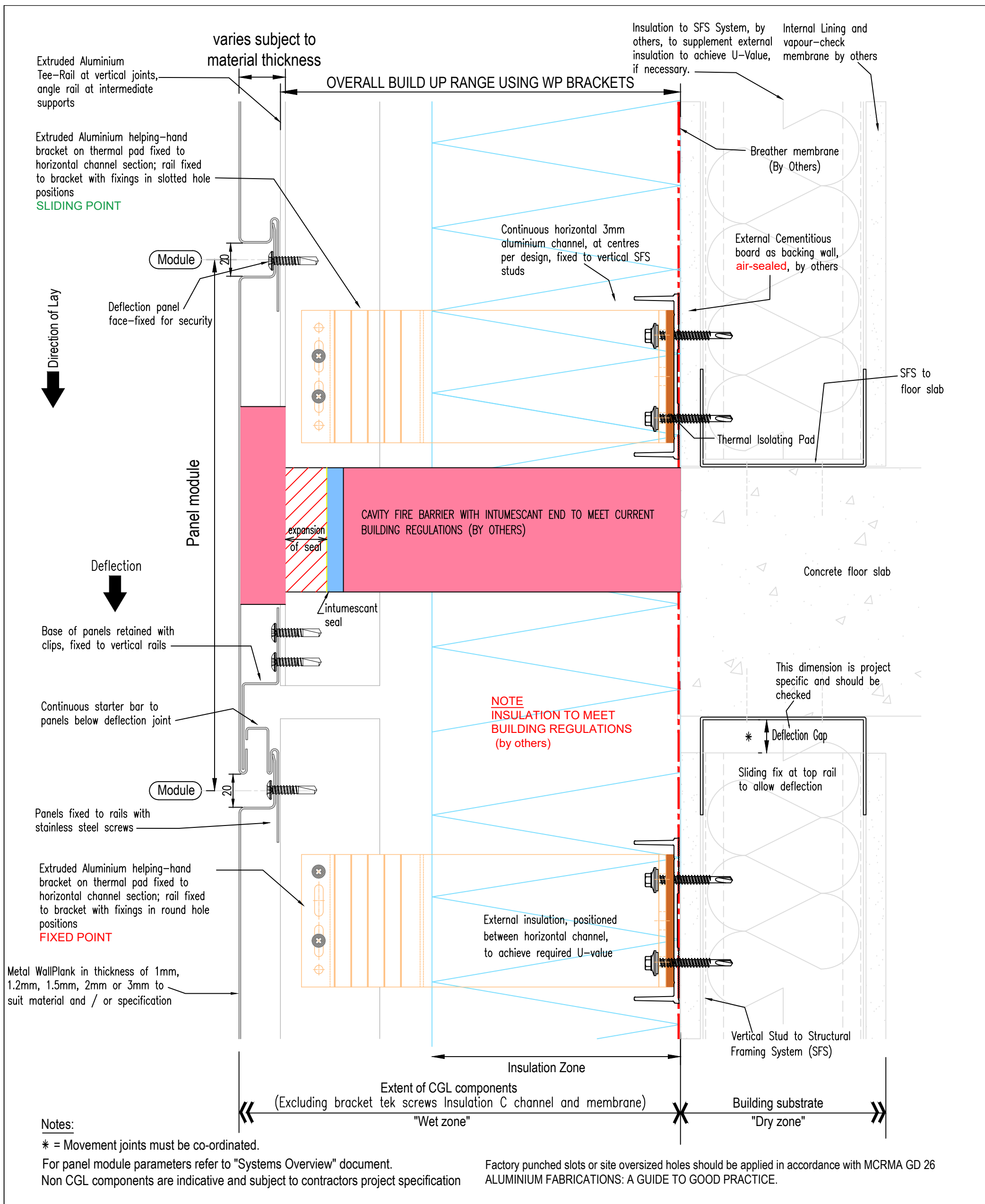


2 Young Place
 Kelvin Industrial Estate
 Glasgow
 G75 0TD

sales@cglfacades.com
 tel: 01355 243 021

System
**Rear-Ventilated Facade
 Horizontal WallPlank System (1mm to 3mm thick Metal)**

Drawing No	Description	Revision	Scale
WP-H-04	Section at Horizontal Joint	-	1:2 @ A3
Drawn by	Rev	Description	Date
SW			
			By
			Date
			Oct 2024



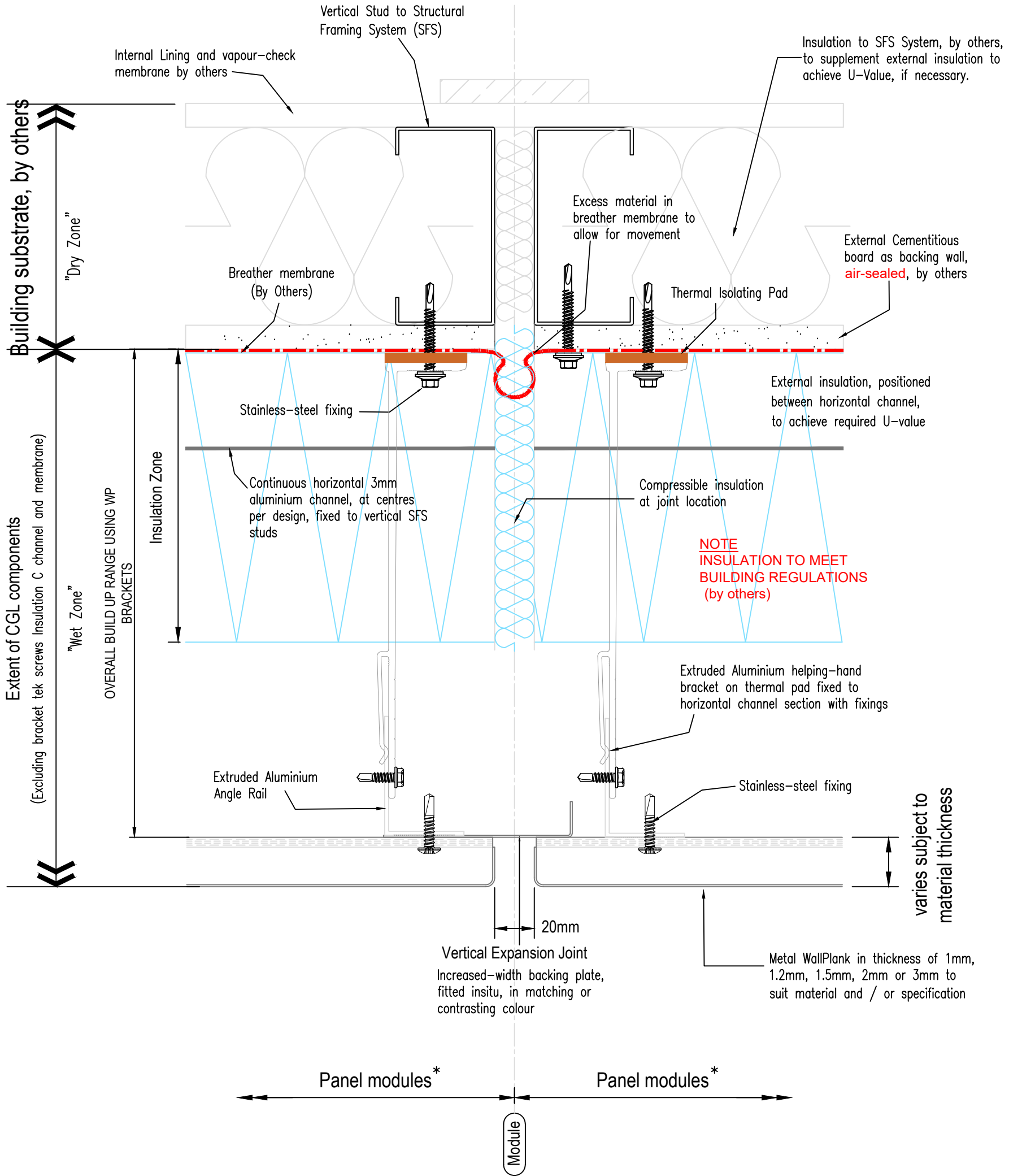
2 Young Place
Kelvin Industrial Estate
Glasgow
G75 0TD

sales@cglfacades.com
tel: 01355 243 021

System
**Rear-Ventilated Facade
Horizontal WallPlank System (1mm to 3mm thick Metal)**

Drawing No WP-H-05	Description Deflection Detail at Floor Slab (incorporating fire stop arrangement)	Revision -	Scale 1:2 @ A3
------------------------------	--	---------------	-------------------

Drawn by SW	Rev	Description	Date	By	Date Oct 2024
----------------	-----	-------------	------	----	------------------



Notes:

- * For panel module parameters refer to "Systems Overview" document.
- Factory punched slots or site oversized holes should be applied in accordance with MCRMA GD 26
- ALUMINIUM FABRICATIONS: A GUIDE TO GOOD PRACTICE.
- Non CGL components are indicative and subject to contractors project specification

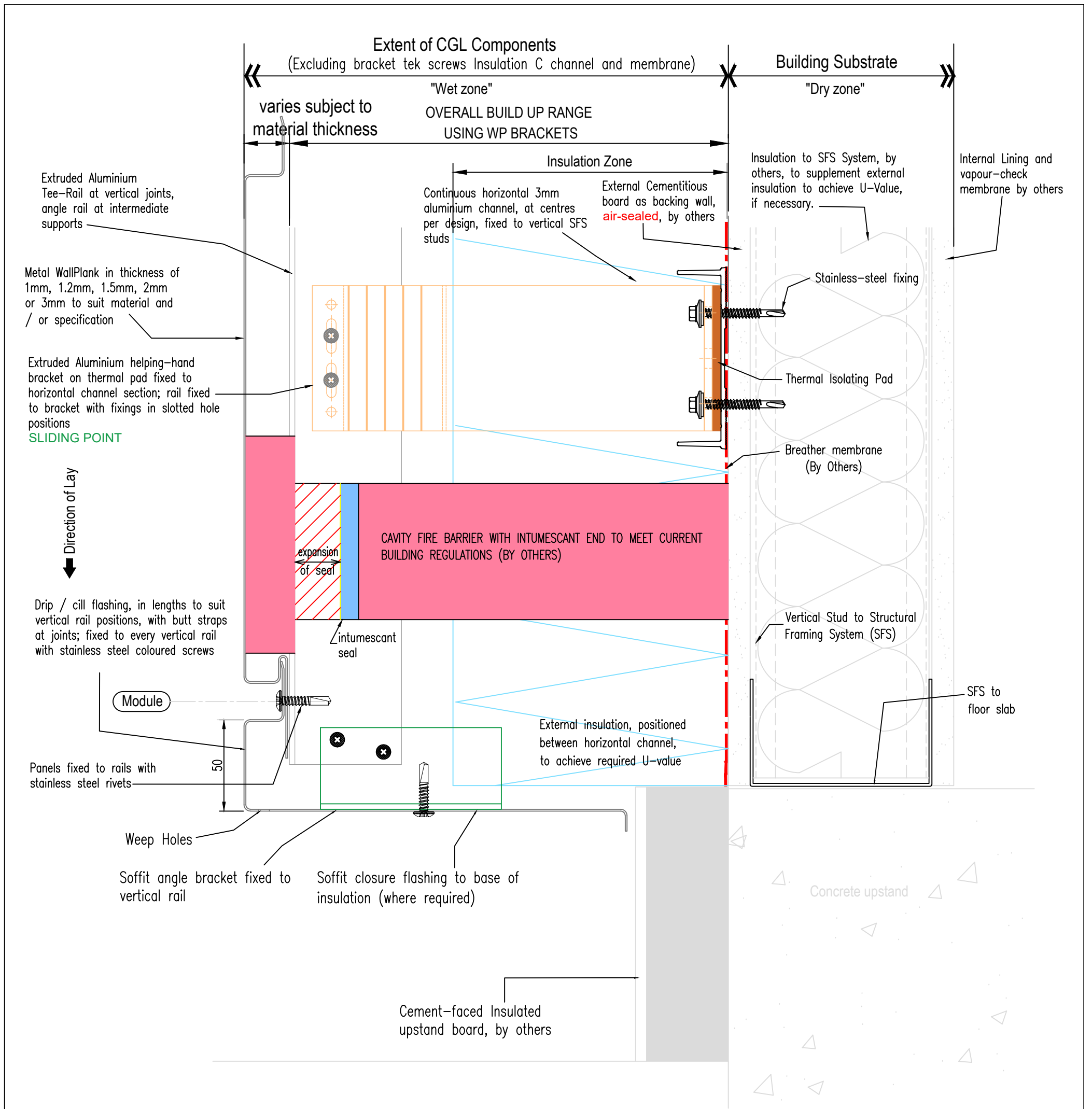


2 Young Place
Kelvin Industrial Estate
Glasgow
G75 0TD

sales@cglfacades.com
tel: 01355 243 021

System
**Rear-Ventilated Facade
Horizontal WallPlank System (1mm to 3mm thick Metal)**

Drawing No	Description	Revision	Scale
WP-H-06	Section at Vertical Expansion Joint	-	1:2 @ A3
Drawn by	Rev	Description	Date
SW			
			By
			Date
			Oct 2024



Notes:

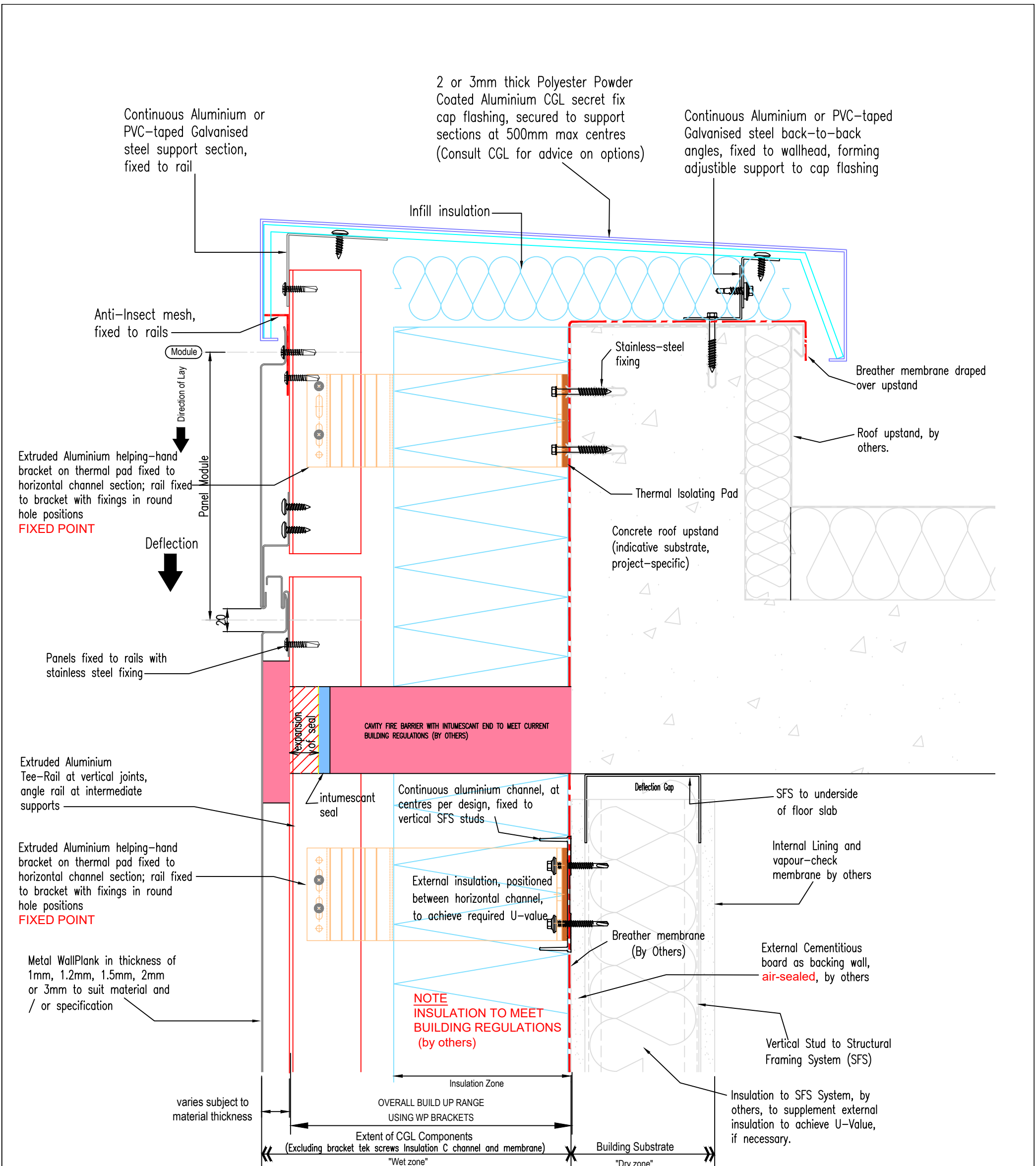
- For panel module parameters refer to "Systems Overview" document.
- Factory punched slots or site oversized holes should be applied in accordance with MCRMA GD 26
- ALUMINIUM FABRICATIONS: A GUIDE TO GOOD PRACTICE.
- Non CGL components are indicative and subject to contractors project specification



2 Young Place
Kelvin Industrial Estate
Glasgow
G75 0TD

sales@cglfacades.com
tel: 01355 243 021

System					
Rear-Ventilated Facade Horizontal WallPlank System (1mm to 3mm thick Metal)					
Drawing No		Description		Revision	Scale
WP-H-07		Section at Base of Cladding		-	1:2 @ A3
Drawn by		Rev	Description	Date	By
SW					
					Date
					Oct 2024



Notes:

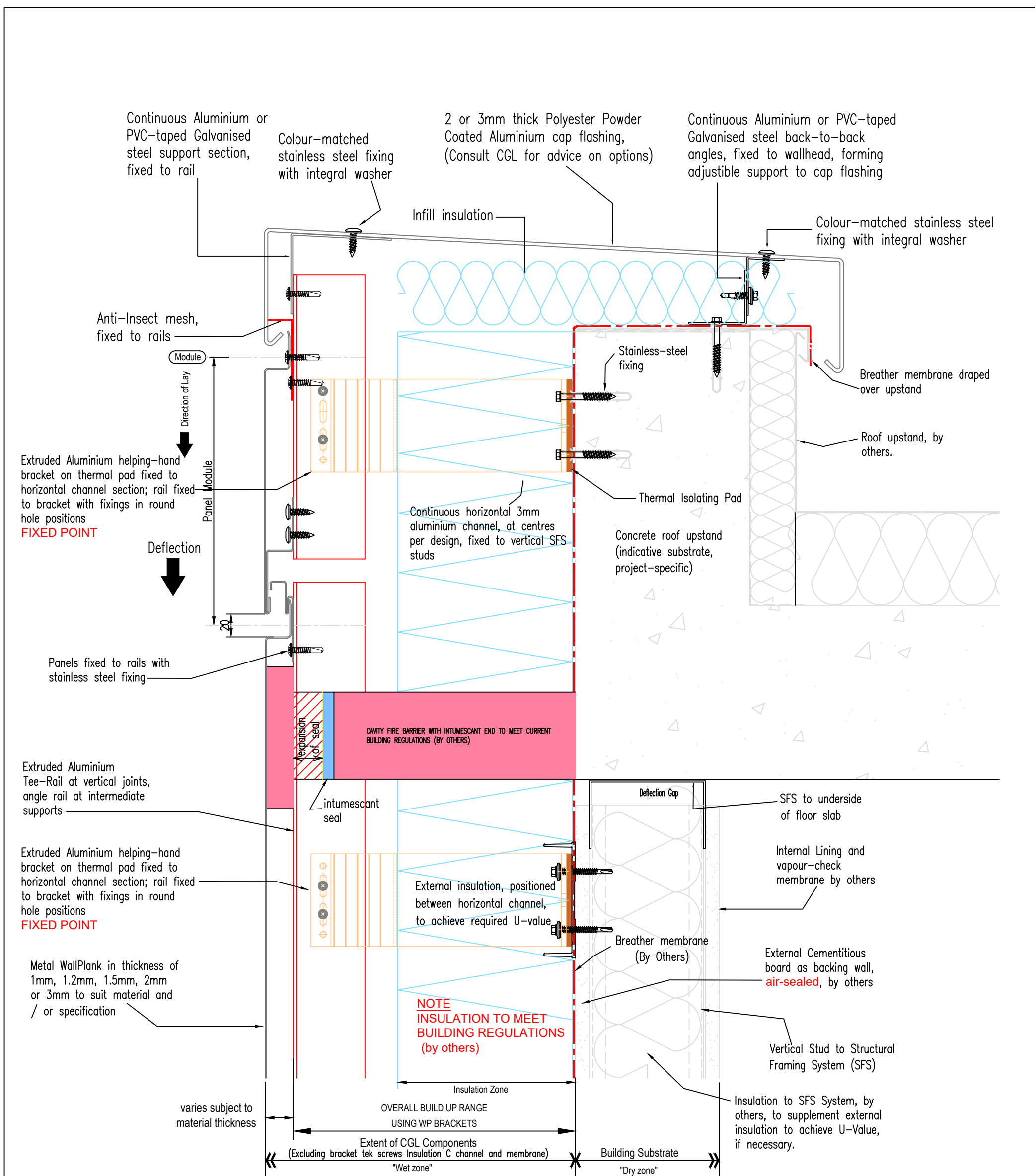
For panel module parameters refer to "Systems Overview" document.
 Factory punched slots or site oversized holes should be applied in accordance with MCRMA GD 26
 ALUMINIUM FABRICATIONS: A GUIDE TO GOOD PRACTICE.
 Non CGL components are indicative and subject to contractors project specification



2 Young Place
 Kelvin Industrial Estate
 Glasgow
 G75 0TD

sales@cglfacades.com
 tel: 01355 243 021

System					
Rear-Ventilated Facade					
Horizontal WallPlank System (1mm to 3mm thick Metal)					
Drawing No	Description			Revision	Scale
WP-H-08	Section at Top of Cladding Secret-Fix Capping			-	1:3 @ A3
Drawn by	Rev	Description	Date	By	Date
SW					Oct 2024



Notes:

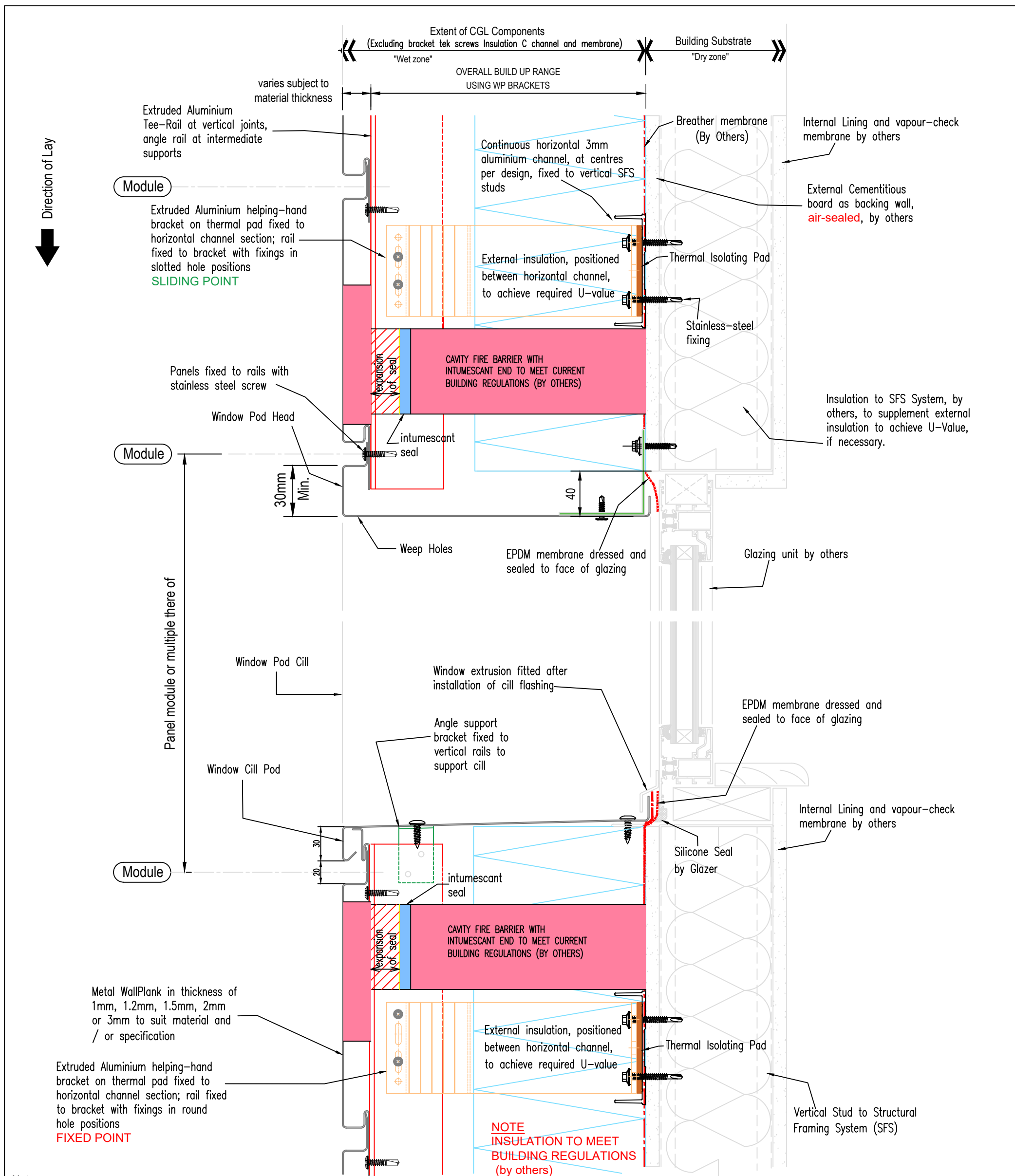
For panel module parameters refer to "Systems Overview" document.
 Factory punched slots or site oversized holes should be applied in accordance with MCRMA GD 26 ALUMINIUM FABRICATIONS: A GUIDE TO GOOD PRACTICE.
 Non CGL components are indicative and subject to contractors project specification



2 Young Place
 Kelvin Industrial Estate
 Glasgow
 G75 0TD

sales@cglfacades.com
 tel: 01355 243 021

System					
Rear-Ventilated Facade					
Horizontal WallPlank System (1mm to 3mm thick Metal)					
Drawing No	Description			Revision	Scale
WP-H-08	Section at Top of Cladding Face-Fix Capping			-	1:3 @ A3
Drawn by	Rev	Description	Date	By	Date
SW					Oct 2024



Notes:

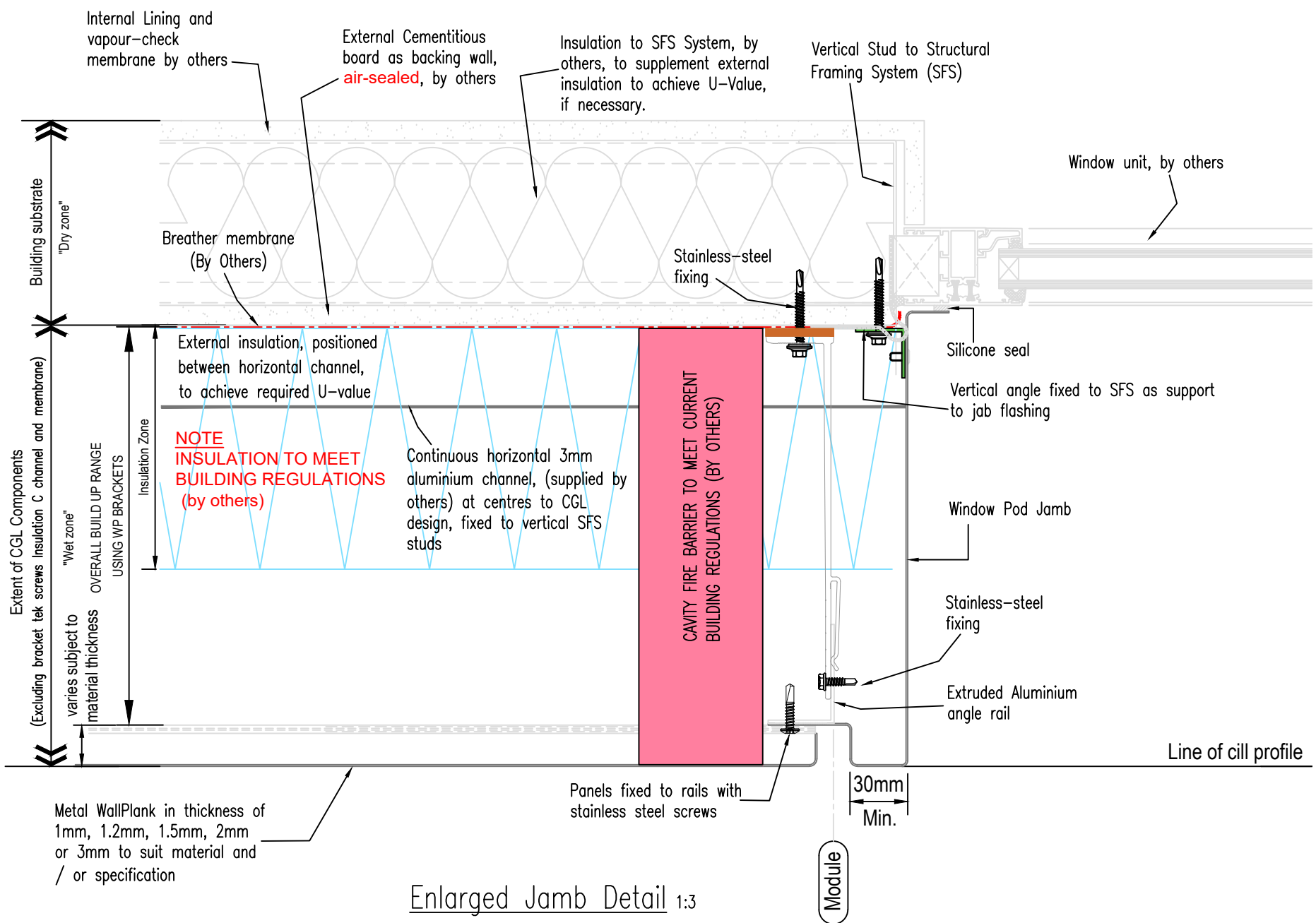
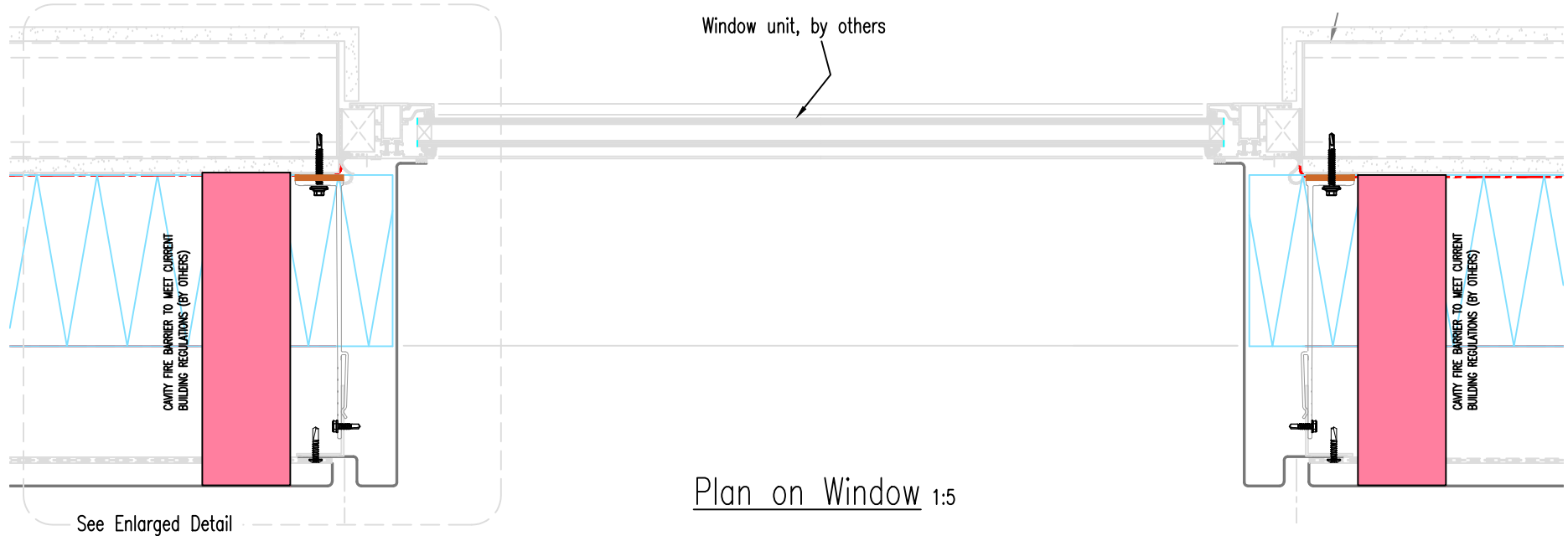
Factory punched slots or site oversized holes should be applied in accordance with MCRMA GD 26
 ALUMINIUM FABRICATIONS: A GUIDE TO GOOD PRACTICE.
 Non CGL components are indicative and subject to contractors project specification



2 Young Place
 Kelvin Industrial Estate
 Glasgow
 G75 0TD

sales@cglfacades.com
 tel: 01355 243 021

System					
Rear-Ventilated Facade Horizontal WallPlank System (1mm to 3mm thick Metal)					
Drawing No		Description		Revision	Scale
WP-H-09		Section thro' Window		-	1:3 @ A3
Drawn by	Rev	Description	Date	By	Date
SW					Oct 2024



Notes:

For panel module parameters refer to "Systems Overview" document.
 Factory punched slots or site oversized holes should be applied in accordance with MCRMA GD 26
 ALUMINIUM FABRICATIONS: A GUIDE TO GOOD PRACTICE.
 Non CGL components are indicative and subject to contractors project specification



2 Young Place
 Kelvin Industrial Estate
 Glasgow
 G75 0TD

sales@cglfacades.com
 tel: 01355 243 021

System
Rear-Ventilated Facade
Horizontal WallPlank System (1mm to 3mm thick Metal)

Drawing No	Description	Revision	Scale
WP-H-10	Window Jamb Detail	-	As shown @ A3
Drawn by	Rev	Description	Date
SW			
			By
			Date
			Oct 2024

Factory formed corner Metal WallPlank in thickness of 1mm, 1.2mm, 1.5mm, 2mm or 3mm to suit material and / or specification

Extruded Aluminium helping-hand bracket on thermal pad fixed to horizontal channel section

Metal WallPlank in thickness of 1mm, 1.2mm, 1.5mm, 2mm or 3mm to suit material and / or specification

500

Panels fixed to rails with stainless steel rivets

Module

500

NOTE
INSULATION TO MEET BUILDING REGULATIONS (by others)

Stainless-steel fixing

Breather membrane (By Others)

CAVITY FIRE BARRIER TO MEET CURRENT BUILDING REGULATIONS (BY OTHERS)

Extruded Aluminium Tee-Rail at vertical joints

Joint backing plate, fitted insitu, in matching or contrasting colour

Module

Extruded Aluminium helping-hand bracket on thermal pad fixed to horizontal channel section

Internal Lining and vapour-check membrane by others

Thermal Isolating Pad

Vertical Studs to Structural Framing System (SFS)

Breather membrane (By Others)

Insulation to SFS System, by others, to supplement external insulation to achieve U-Value, if necessary.

External Cementitious board as backing wall, **air-sealed**, by others

Continuous horizontal 3mm aluminium channel, at centres per design, fixed to vertical SFS studs

External insulation, positioned between horizontal channel, to achieve required U-value

Insulation Zone

OVERALL BUILD UP RANGE USING WP BRACKETS

varies subject to material thickness

Extent of CGL Components (Excluding bracket tek screws Insulation C channel and membrane)

Building Substrate

"Wet zone"

"Dry zone"

Notes:

For panel module parameters refer to "Systems Overview" document.

Factory punched slots or site oversized holes should be applied in accordance with MCRMA GD 26

ALUMINIUM FABRICATIONS: A GUIDE TO GOOD PRACTICE.

Non CGL components are indicative and subject to contractors project specification



2 Young Place
Kelvin Industrial Estate
Glasgow
G75 0TD

sales@cglfacades.com
tel: 01355 243 021

System

**Rear-Ventilated Facade
Horizontal WallPlank System (1mm to 3mm thick Metal)**

Drawing No

WP-H-11

Description

External Corner Panel Detail

Revision

-

Scale

1:3 @ A3

Drawn by

SW

Rev

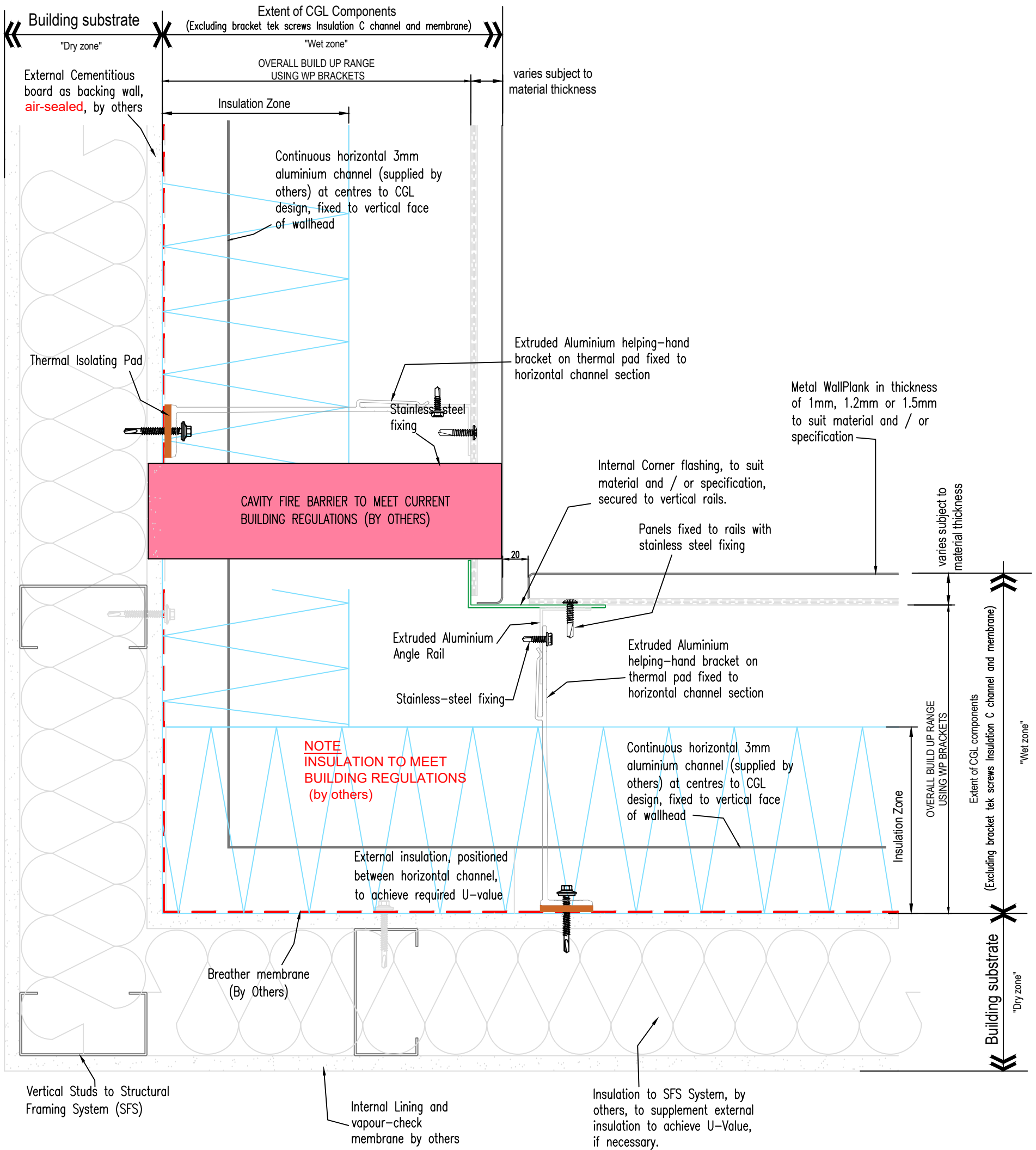
Description

Date

By

Date

Oct 2024



Notes:

- For panel module parameters refer to "Systems Overview" document.
- Factory punched slots or site oversized holes should be applied in accordance with MCRMA GD 26 ALUMINIUM FABRICATIONS: A GUIDE TO GOOD PRACTICE.
- Non CGL components are indicative and subject to contractors project specification



2 Young Place
Kelvin Industrial Estate
Glasgow
G75 0TD

sales@cglfacades.com
tel: 01355 243 021

System					
Rear-Ventilated Facade					
Horizontal WallPlank System (1mm to 3mm thick Metal)					
Drawing No	Description			Revision	Scale
WP-H-12	Internal Corner Detail			-	1:3 @ A3
Drawn by	Rev	Description	Date	By	Date
SW					Oct 2024