

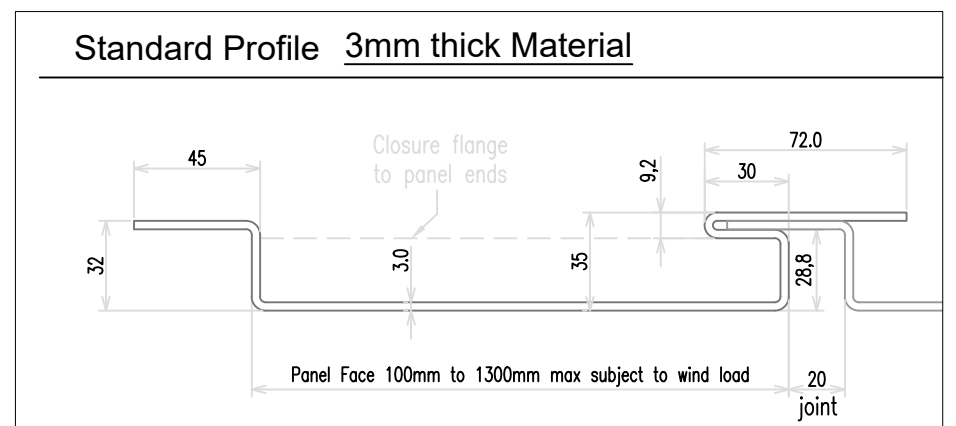
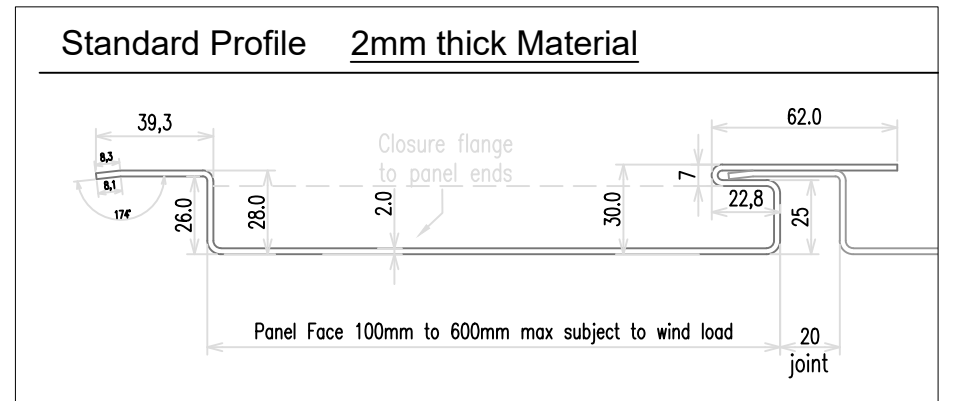
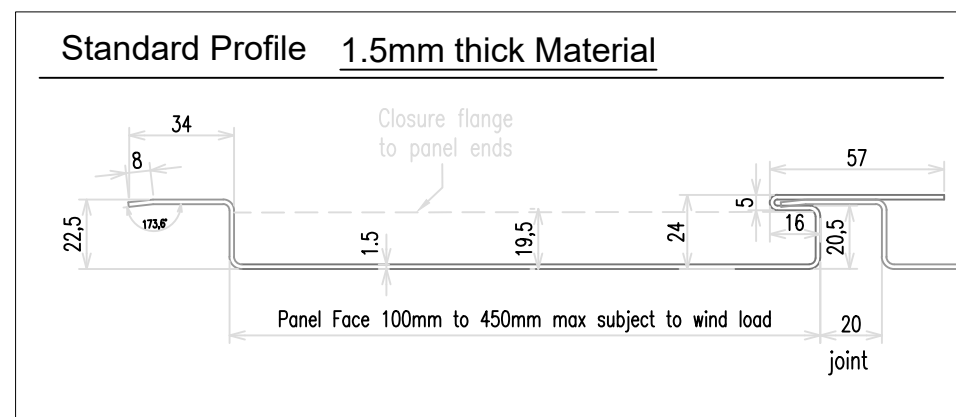
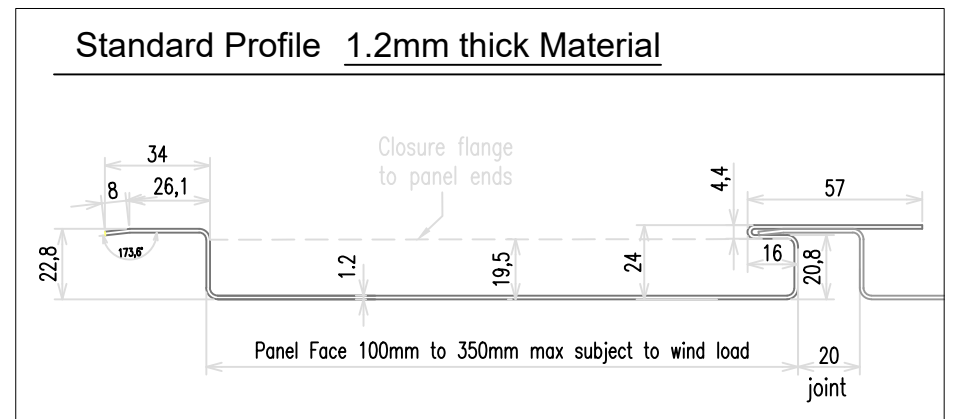
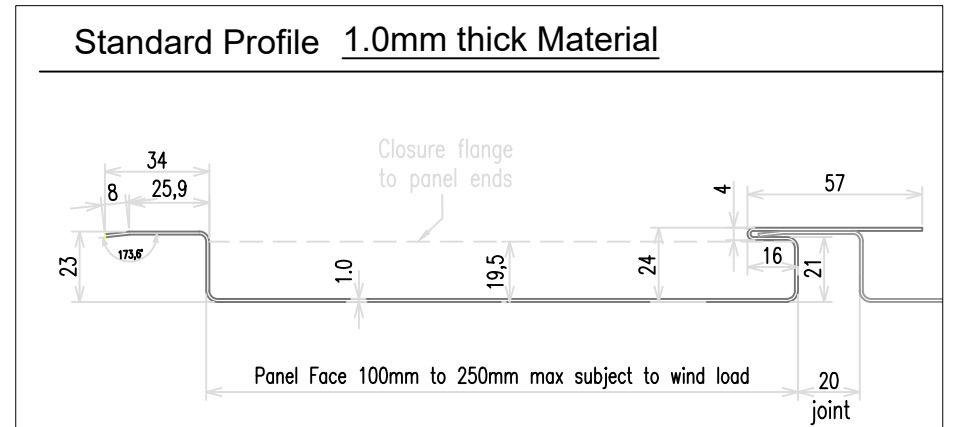
CGL Facades

Rear-Ventilated Vertical WallPlank System

1mm to 3mm thick Sheet Metal

Contents

- WP-V-00 - System Contents & Photographs
- WP-V-01 - Range of Bracket System
- WP-V-02 - Cladding Detail Locations
- WP-V-03 - Section at Vertical Joint
- WP-V-04 - Section at Horizontal Joint
- WP-V-05 - Deflection Joint at Floor Slab (including Fire-Stop)
- WP-V-06 - Section thro' Vertical Expansion Joint
- WP-V-07 - Section at Base of Cladding
- WP-V-08 - Section at Head of Cladding
- WP-V-09 - Vertical Section thro' Window
- WP-V-10 - Window Jamb Detail
- WP-V-11 - External Corner
- WP-V-12 - Internal Corner
- WP-V-13 - Alternative Deflection Joint at Floor Slab (including Fire-Stop)



2 Young Place
Kelvin Industrial Estate
Glasgow
G75 0TD

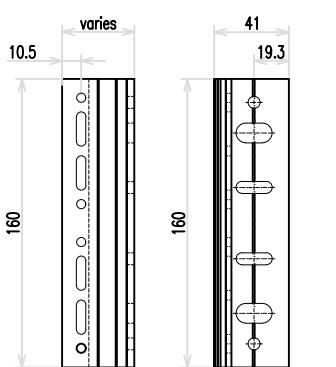
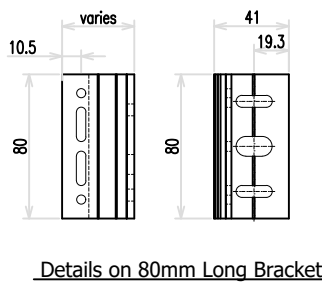
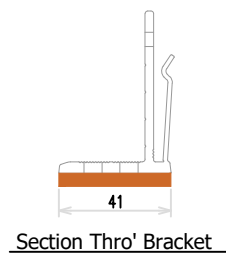
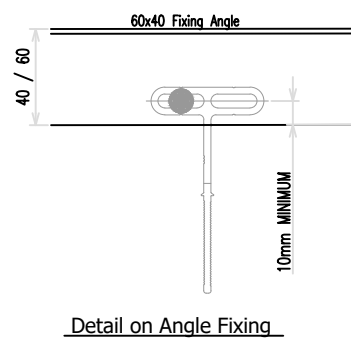
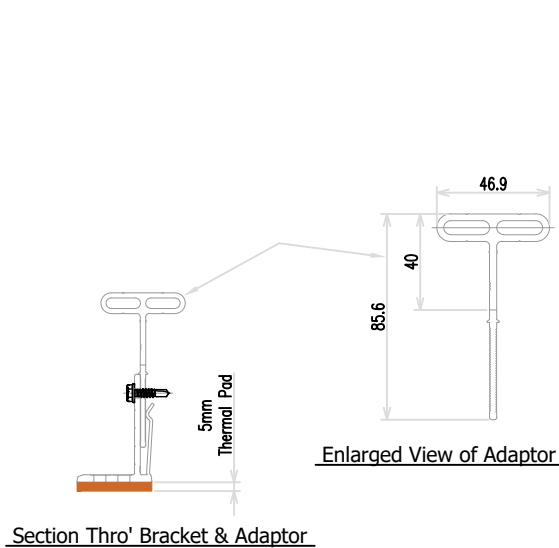
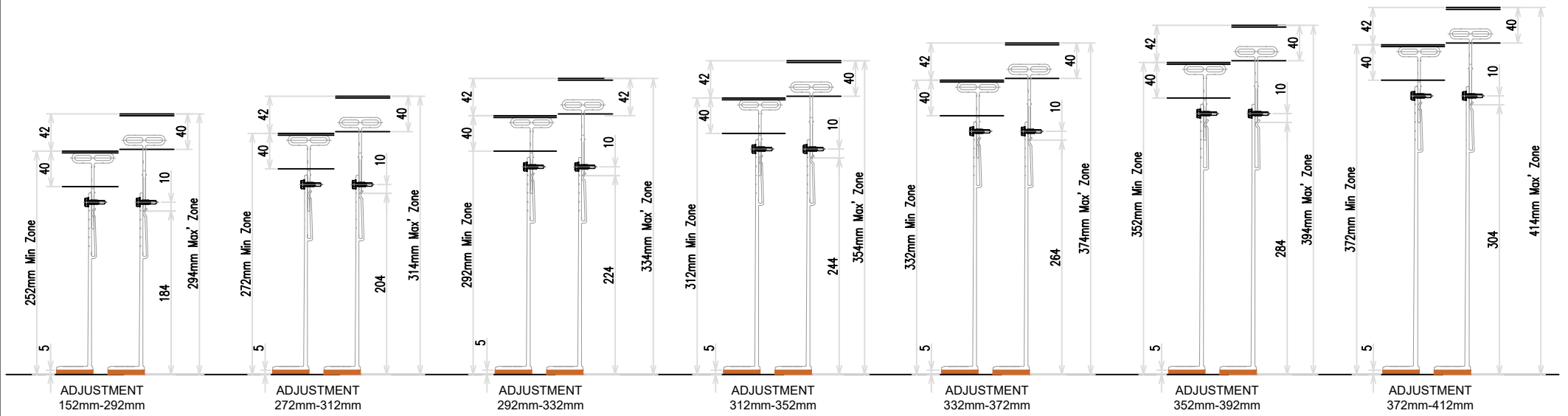
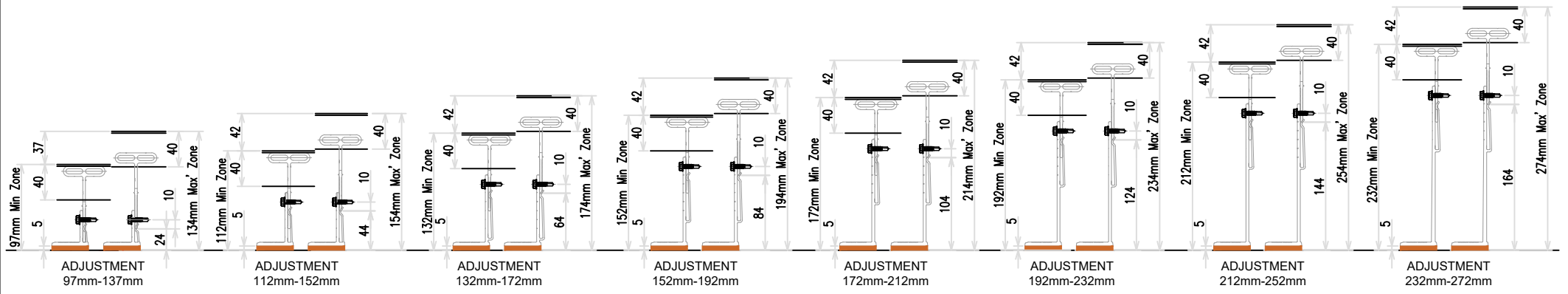
sales@cglfacades.com
tel: 01355 243 021

System
Rear-Ventilated Facade
Vertical WallPlank System

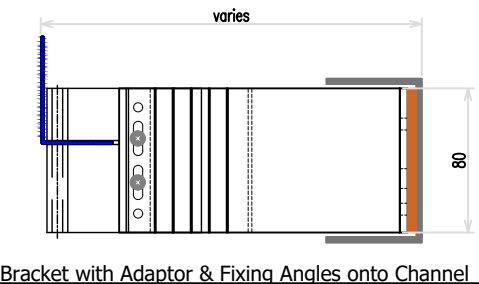
| | | | |
|------------|----------------------|-------------|----------|
| Drawing No | Description | Revision | Scale |
| WP-V-00 | System Contents Page | | - |
| Drawn by | Rev | Description | Date |
| SW | | | |
| | | | By |
| | | | Date |
| | | | Oct 2024 |

RANGE OF BRACKET SYSTEM

40mm ANGLE LEG IN ADAPTER



| BRACKETS | Adjustment range for each bracket (mm) | |
|----------|--|--------|
| WP - 40 | from 97 | to 134 |
| WP - 60 | from 112 | to 154 |
| WP - 80 | from 132 | to 174 |
| WP - 100 | from 152 | to 194 |
| WP - 120 | from 172 | to 214 |
| WP - 140 | from 192 | to 234 |
| WP - 160 | from 212 | to 254 |
| WP - 180 | from 232 | to 274 |
| WP - 200 | from 252 | to 294 |
| WP - 220 | from 272 | to 314 |
| WP - 240 | from 292 | to 334 |
| WP - 260 | from 312 | to 354 |
| WP - 280 | from 332 | to 374 |
| WP - 300 | from 352 | to 394 |
| WP - 320 | from 372 | to 414 |
| | NOTE: - BASED ON 40 x 60mm ANGLE SECTIONS DIMENSION RANGES DOES INCLUDE FOR 5mm THERMAL PADS | |



2 Young Place
Kelvin Industrial Estate
Glasgow
G75 0TD

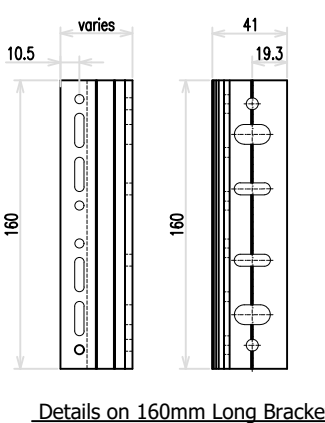
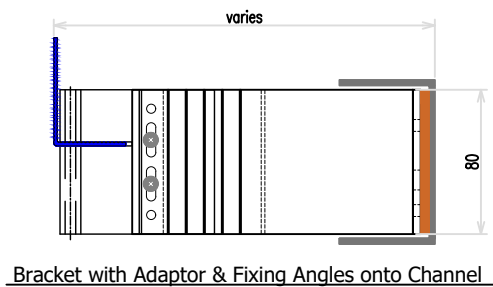
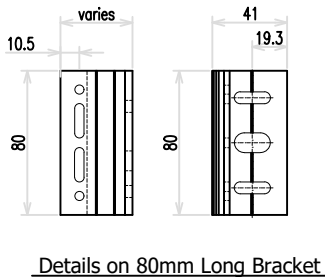
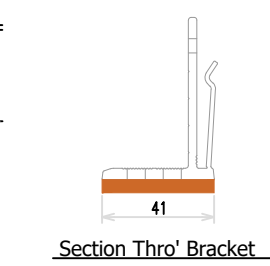
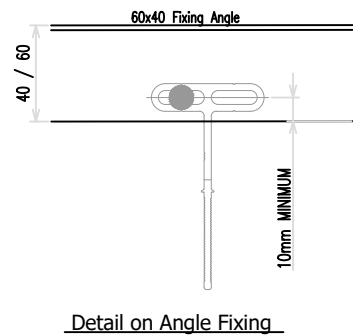
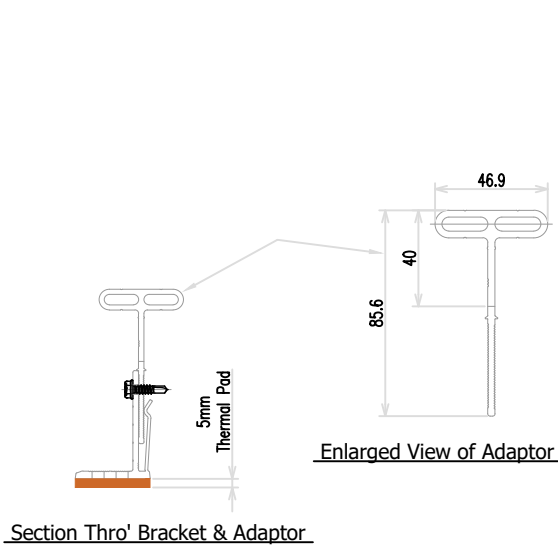
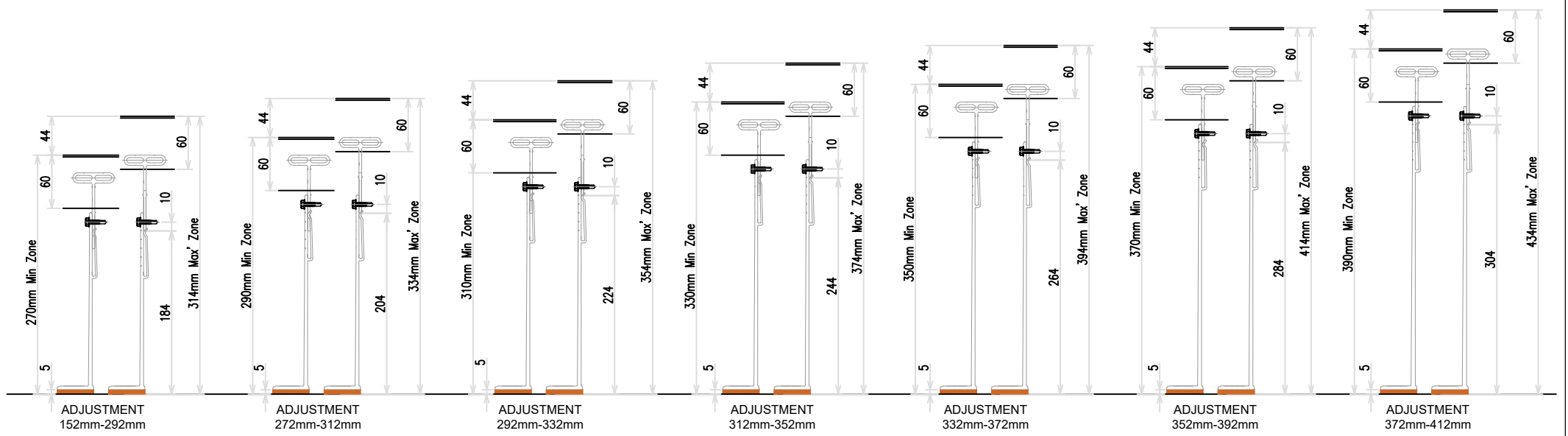
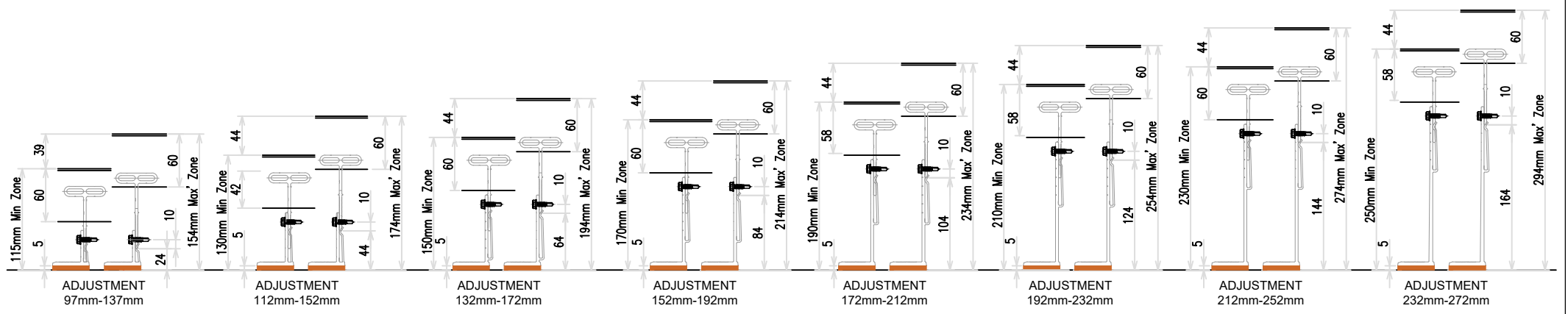
sales@cglfacades.com
tel: 01355 243 021

System
**Rear-Ventilated Facade
Vertical WallPlank System**

| | | | |
|------------------------------|---|-------------|----------|
| Drawing No WP-V-01 | Description Range of Bracket System | Revision | Scale |
| Drawn by SW | Rev | Description | Date |
| | | | By |
| | | | Date |
| | | | Oct 2024 |

RANGE OF BRACKET SYSTEM

60mm ANGLE LEG IN ADAPTER



| BRACKETS | Adjustment range for each bracket (mm) | |
|--|--|--------|
| WP - 40 | from 115 | to 154 |
| WP - 60 | from 130 | to 174 |
| WP - 80 | from 150 | to 194 |
| WP - 100 | from 170 | to 214 |
| WP - 120 | from 190 | to 234 |
| WP - 140 | from 210 | to 254 |
| WP - 160 | from 230 | to 274 |
| WP - 180 | from 250 | to 294 |
| WP - 200 | from 270 | to 314 |
| WP - 220 | from 290 | to 334 |
| WP - 240 | from 310 | to 354 |
| WP - 260 | from 330 | to 374 |
| WP - 280 | from 350 | to 394 |
| WP - 300 | from 370 | to 414 |
| WP - 320 | from 390 | to 434 |
| NOTE: - BASED ON 60 x 40mm ANGLE SECTIONS DIMENSION RANGES DOES INCLUDE FOR 5mm THERMAL PADS | | |

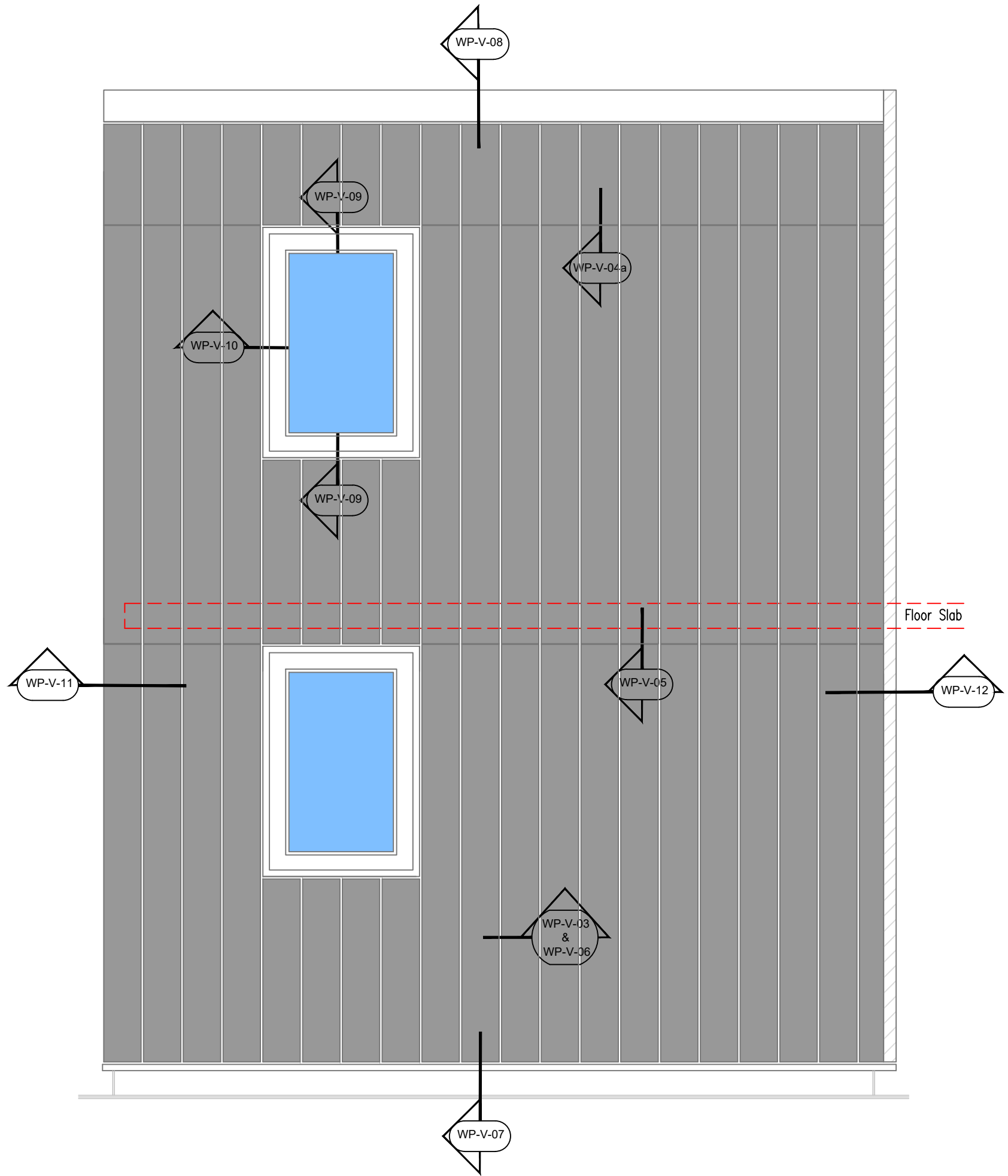


2 Young Place
Kelvin Industrial Estate
Glasgow
G75 0TD

sales@cglfacades.com
tel: 01355 243 021

System
Rear-Ventilated Facade
Vertical WallPlank System

| | | | | | |
|------------|-------------------------|-------------|------|----------|----------|
| Drawing No | Description | | | Revision | Scale |
| WP-V-01a | Range of Bracket System | | | | - |
| Drawn by | Rev | Description | Date | By | Date |
| SW | | | | | Oct 2024 |



Elevation on Cladding

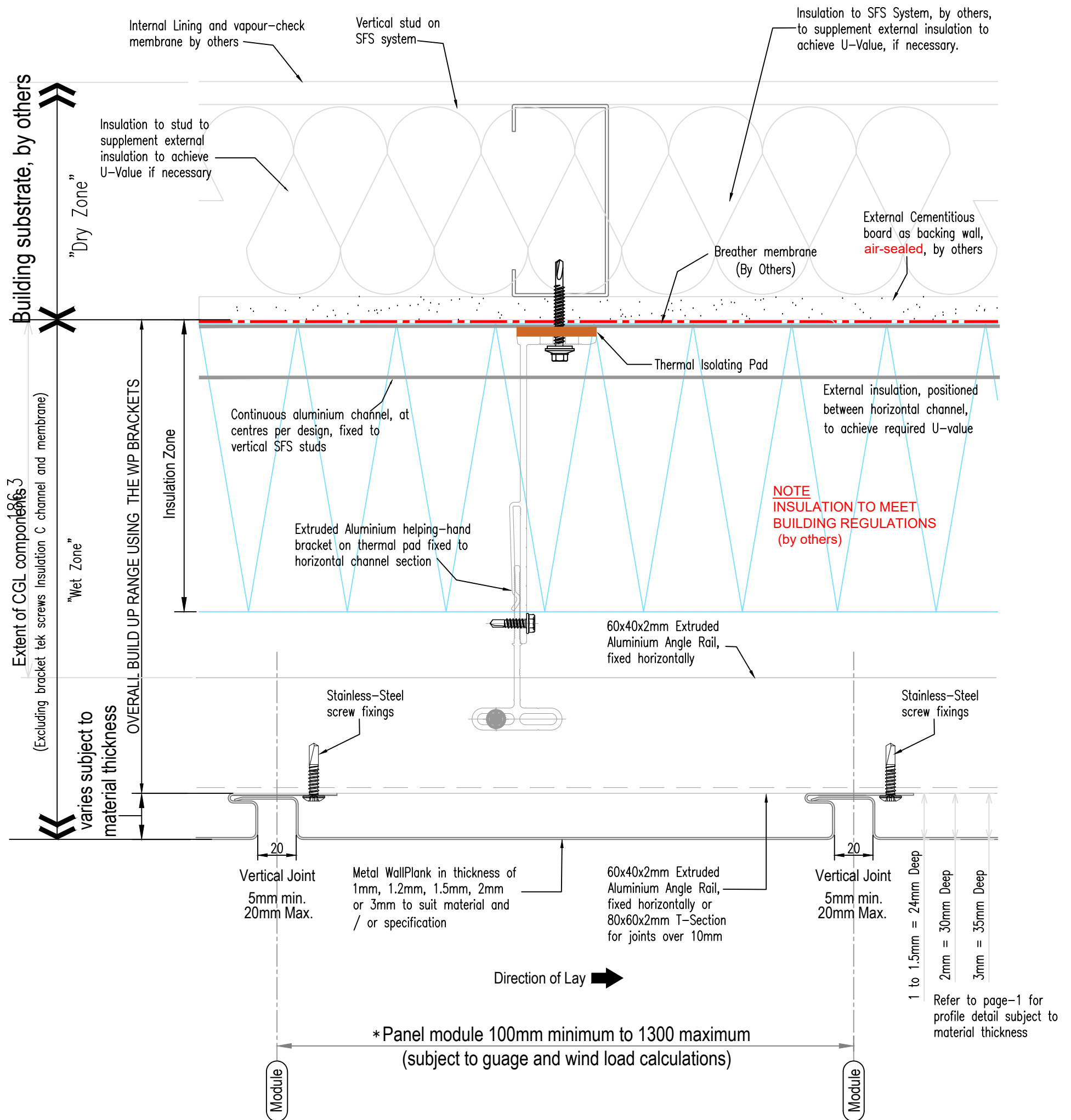


2 Young Place
Kelvin Industrial Estate
Glasgow
G75 0TD

sales@cglfacades.com
tel: 01355 243 021

System
Rear-Ventilated Facade
Vertical WallPlank System

| | | | | | |
|------------------------|-----|--|------|----------|------------------|
| Drawing No WP-V-02a | | Description Cladding Detail Locations | | Revision | Scale - |
| Drawn by SW | Rev | Description | Date | By | Date Oct 2024 |



Notes:

Joint applicable to aluminium, zinc and Copper. Depths and thickness of panels can vary.
 Factory punched slots or site oversized holes should be applied in accordance with MCRMA GD 26
 ALUMINIUM FABRICATIONS: A GUIDE TO GOOD PRACTICE.
 Non CGL components are indicative and subject to contractors project specification.

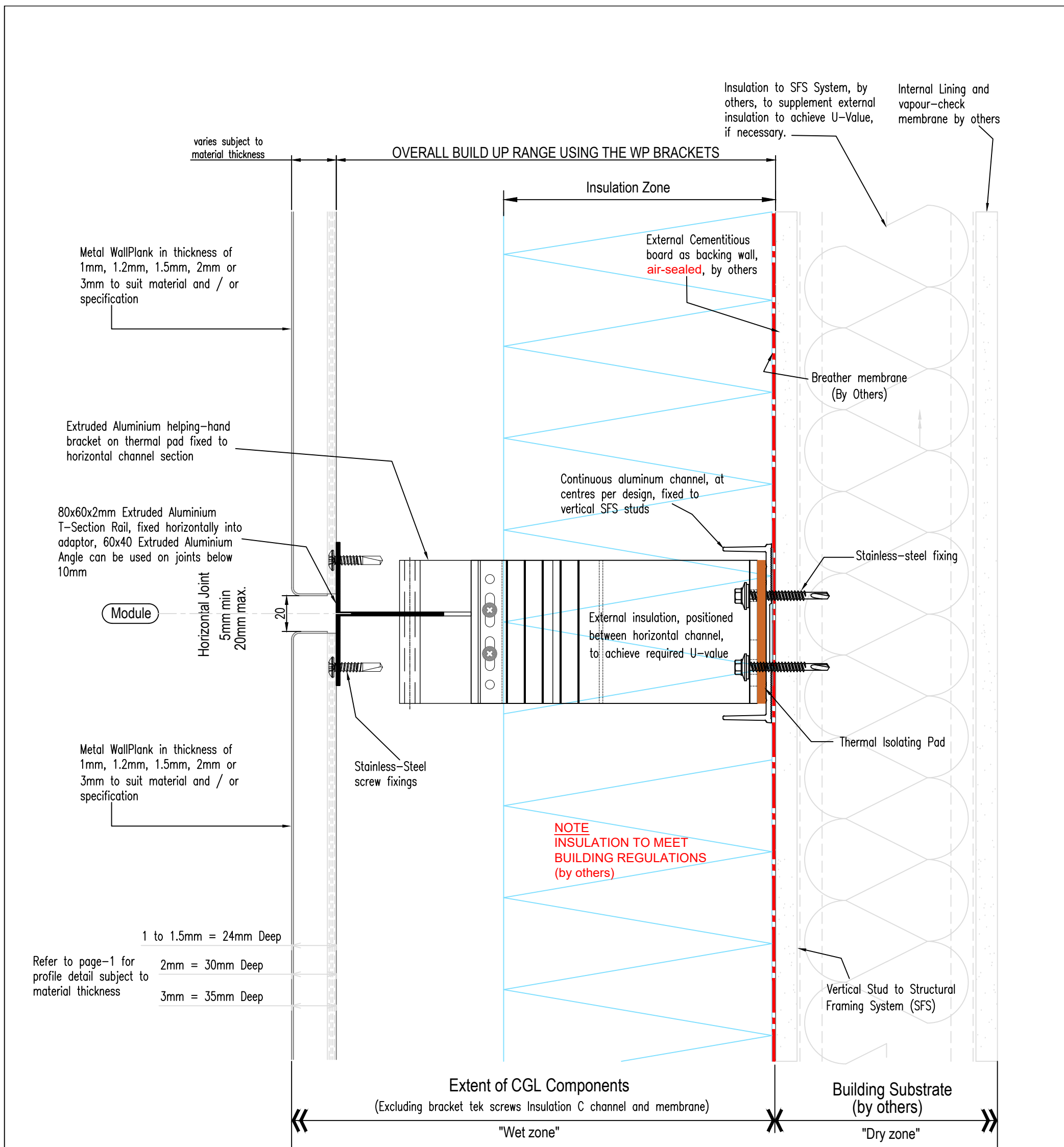


2 Young Place
 Kelvin Industrial Estate
 Glasgow
 G75 0TD

sales@cglfacades.com
 tel: 01355 243 021

System
**Rear-Ventilated Facade
 Vertical WallPlank System**

| | | | |
|------------------------------|---|-------------|-------------------|
| Drawing No WP-V-03 | Description Section at Vertical Joint | Revision | Scale 1:2 @ A3 |
| Drawn by SW | Rev | Description | Date |
| | | | By |
| | | | Date Oct 2024 |



Notes:

Joint applicable to aluminium, zinc and Copper. Depths and thickness of panels can vary.
 Factory punched slots or site oversized holes should be applied in accordance with MCRMA GD 26
 ALUMINIUM FABRICATIONS: A GUIDE TO GOOD PRACTICE.
 Non CGL components are indicative and subject to contractors project specification.

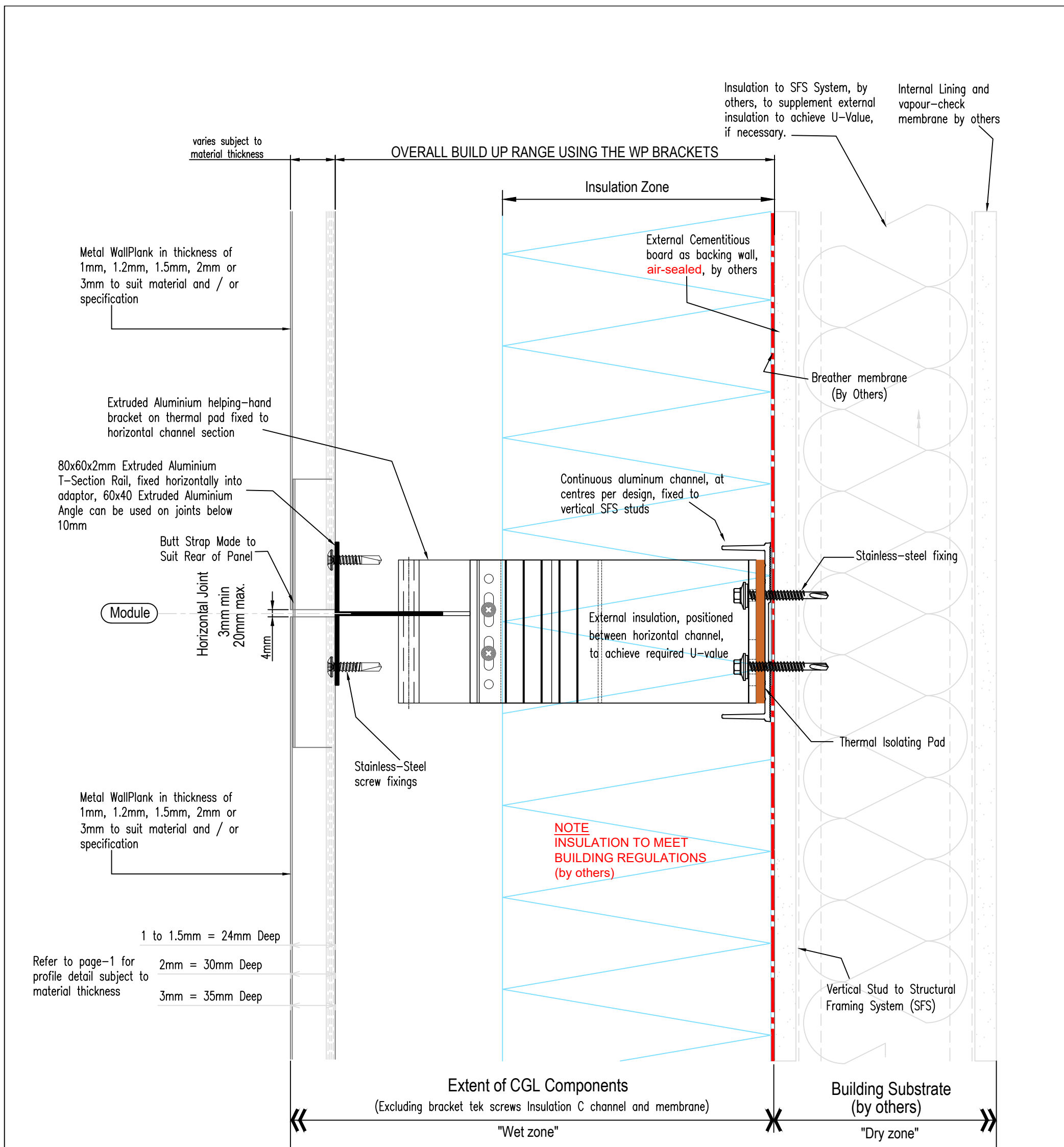


2 Young Place
 Kelvin Industrial Estate
 Glasgow
 G75 0TD

sales@cglfacades.com
 tel: 01355 243 021

System
**Rear-Ventilated Facade
 Vertical WallPlank System**

| | | | |
|------------|------------------------------------|-------------|----------|
| Drawing No | Description | Revision | Scale |
| WP-V-04 | Section at Horizontal Joint (20mm) | | 1:2 @ A3 |
| Drawn by | Rev | Description | Date |
| SW | | | |
| | By | Date | |
| | | Oct 2024 | |



Notes:

Joint applicable to aluminium, zinc and Copper. Depths and thickness of panels can vary.
 Factory punched slots or site oversized holes should be applied in accordance with MCRMA GD 26
 ALUMINIUM FABRICATIONS: A GUIDE TO GOOD PRACTICE.
 Non CGL components are indicative and subject to contractors project specification.

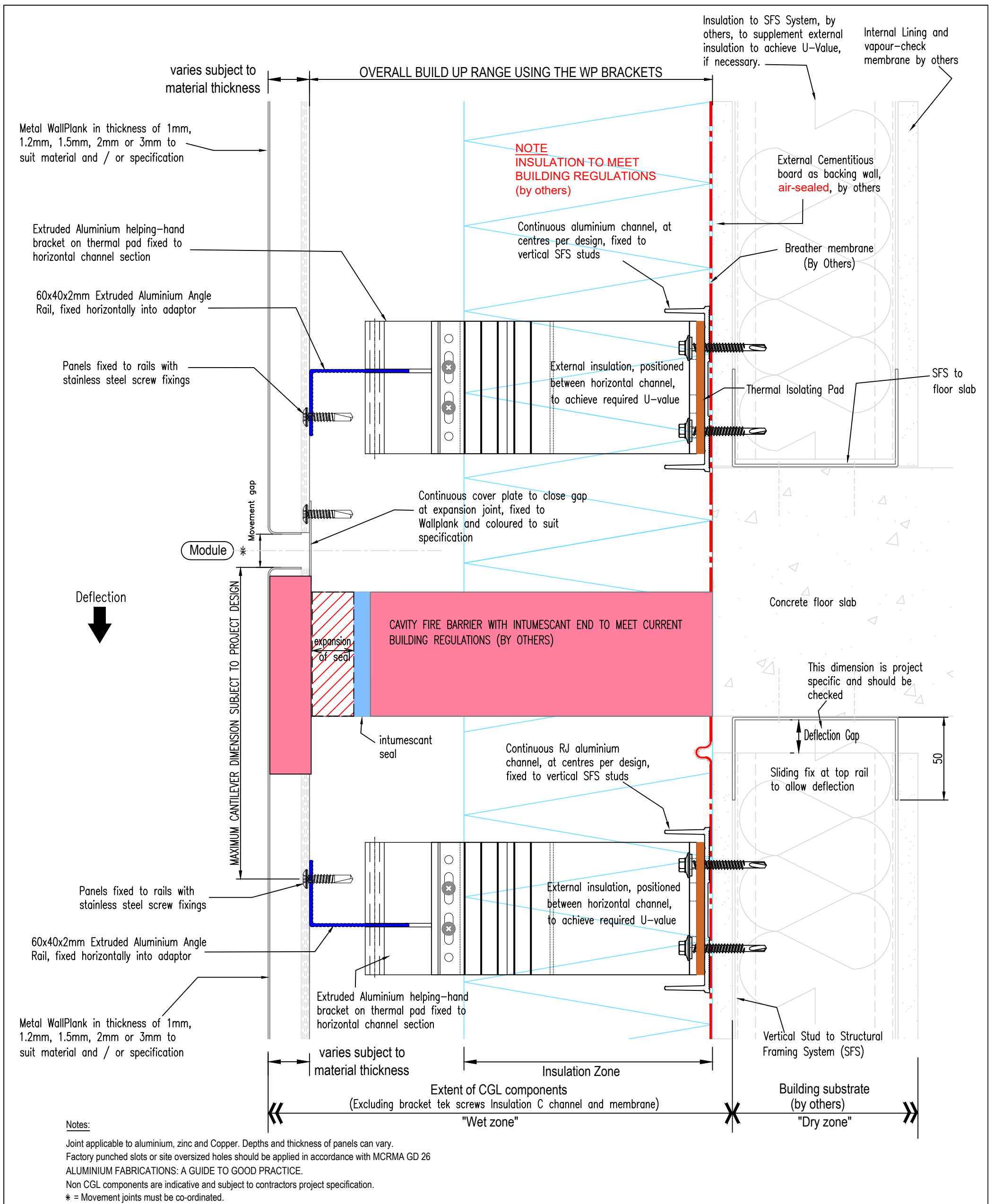


2 Young Place
 Kelvin Industrial Estate
 Glasgow
 G75 0TD

sales@cglfacades.com
 tel: 01355 243 021

System
**Rear-Ventilated Facade
 Vertical WallPlank System**

| | | | |
|------------|-----------------------------------|-------------|----------|
| Drawing No | Description | Revision | Scale |
| WP-V-04a | Section at Horizontal Joint (4mm) | | 1:2 @ A3 |
| Drawn by | Rev | Description | Date |
| SW | | | |
| | | | By |
| | | | Date |
| | | | Oct 2024 |

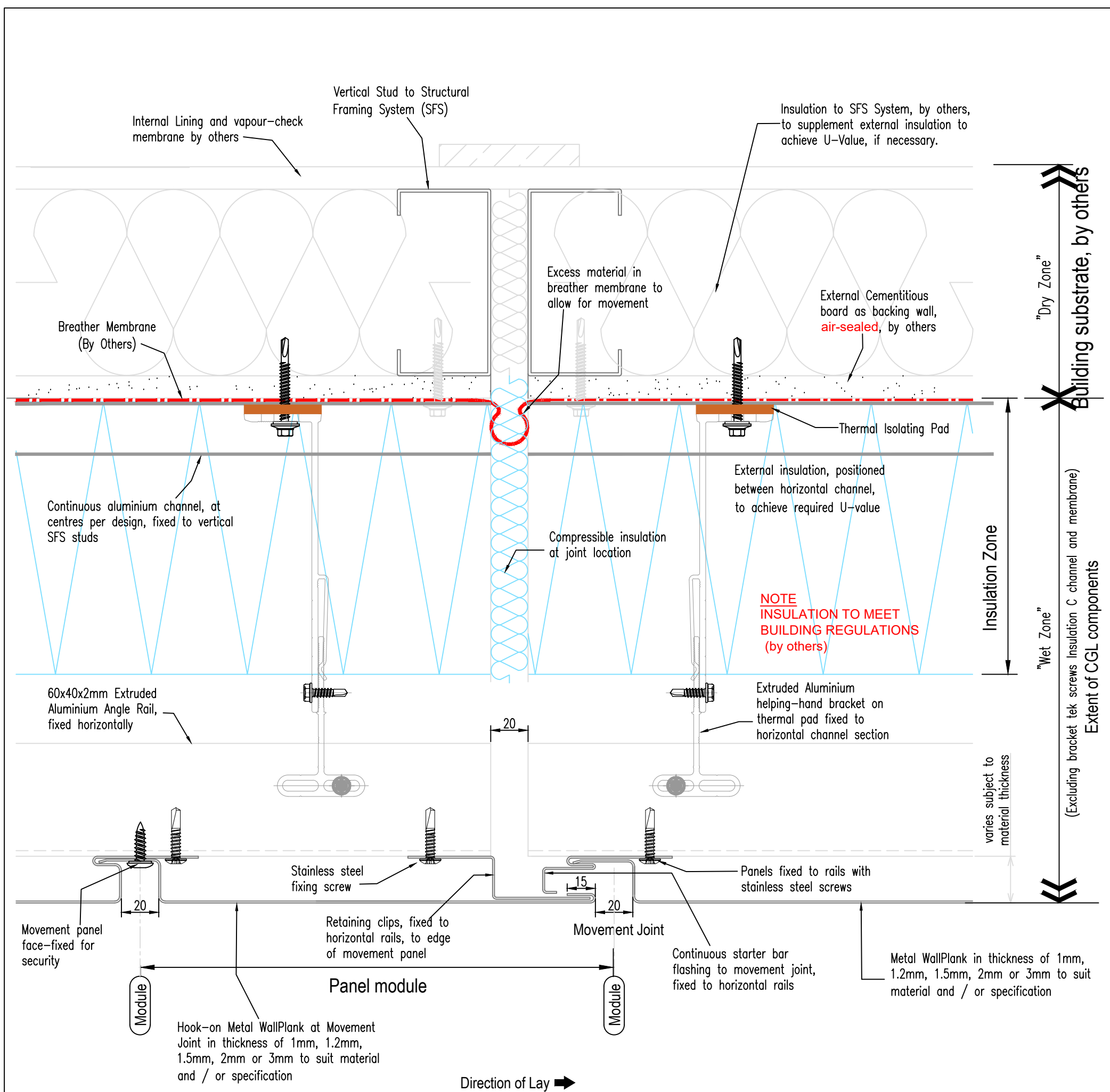


2 Young Place
Kelvin Industrial Estate
Glasgow
G75 0TD

sales@cglfacades.com
tel: 01355 243 021

System
Rear-Ventilated Facade
Vertical WallPlank System

| | | | |
|------------------------------|--|-------------|-------------------|
| Drawing No WP-V-05 | Description Deflection Detail at Floor Slab (incorporating fire stop arrangement) | Revision | Scale 1:2 @ A3 |
| Drawn by SW | Rev | Description | Date |
| | | | By |
| | | | Date Oct 2024 |



Notes:

Joint applicable to aluminium, zinc and Copper. Depths and thickness of panels can vary.
 Factory punched slots or site oversized holes should be applied in accordance with MCRMA GD 26
 ALUMINIUM FABRICATIONS: A GUIDE TO GOOD PRACTICE.
 Non CGL components are indicative and subject to contractors project specification.

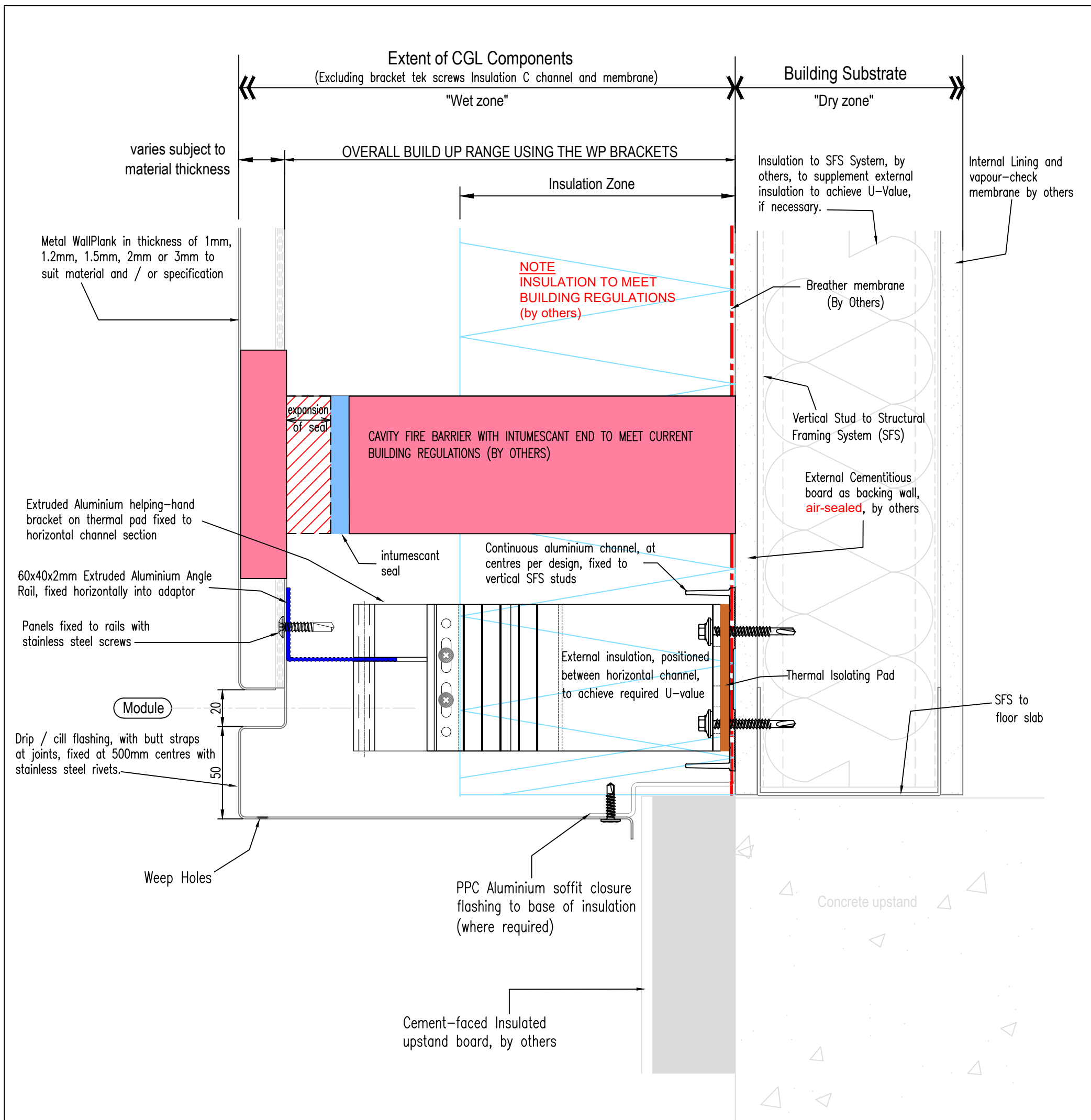


2 Young Place
 Kelvin Industrial Estate
 Glasgow
 G75 0TD

sales@cglfacades.com
 tel: 01355 243 021

System
**Rear-Ventilated Facade
 Vertical WallPlank System**

| | | | |
|------------|-------------------------------------|-------------|----------|
| Drawing No | Description | Revision | Scale |
| WP-V-06 | Section at Vertical Expansion Joint | | 1:2 @ A3 |
| Drawn by | Rev | Description | Date |
| SW | | | |
| | | | By |
| | | | Date |
| | | | Oct 2024 |



Notes:

Joint applicable to aluminium, zinc and Copper. Depths and thickness of panels can vary.
 Factory punched slots or site oversized holes should be applied in accordance with MCRMA GD 26
 ALUMINIUM FABRICATIONS: A GUIDE TO GOOD PRACTICE.
 Non CGL components are indicative and subject to contractors project specification.



2 Young Place
 Kelvin Industrial Estate
 Glasgow
 G75 0TD

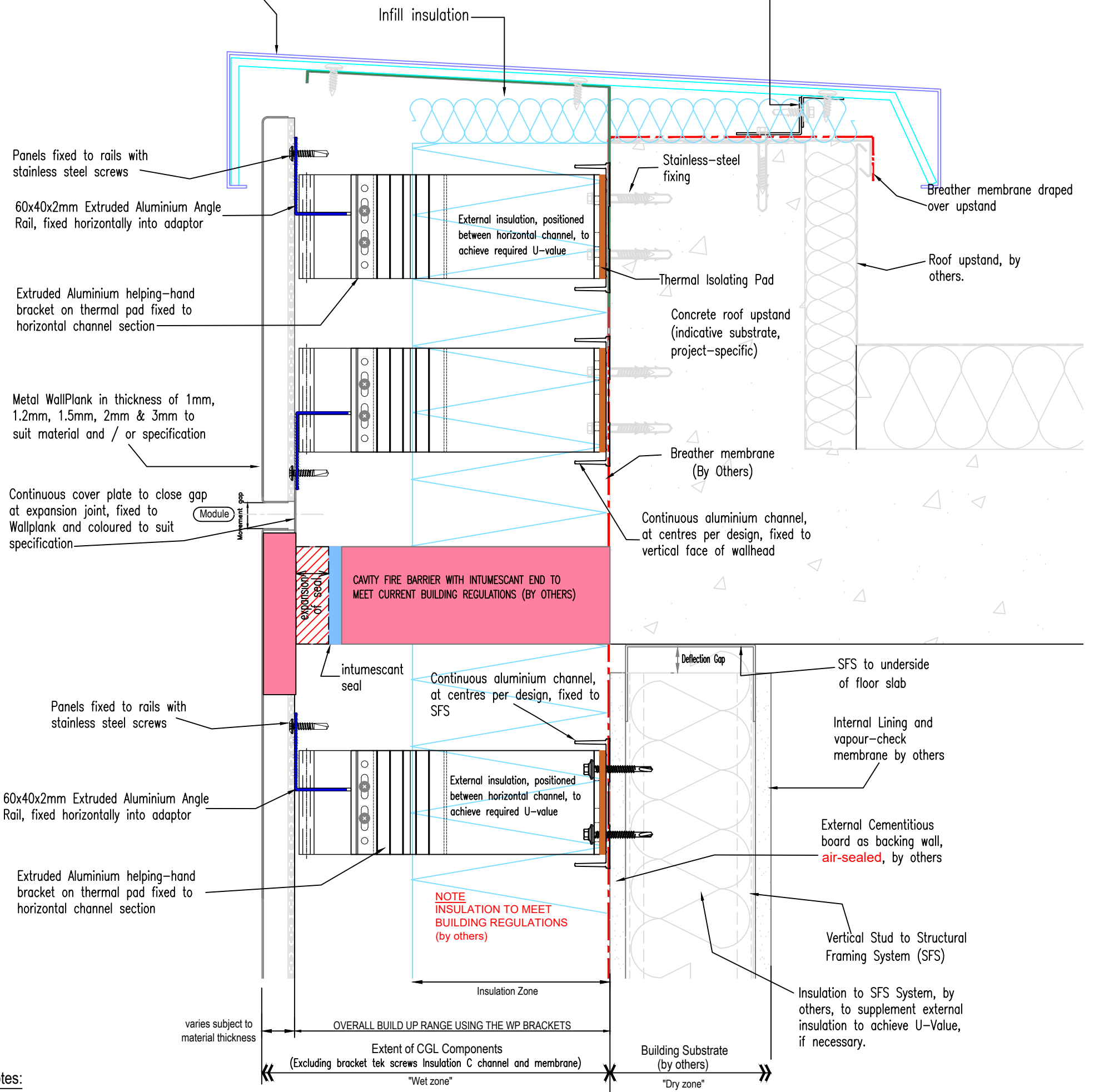
sales@cglfacades.com
 tel: 01355 243 021

System
**Rear-Ventilated Facade
 Vertical WallPlank System**

| | | | |
|------------|-----------------------------|-------------|----------|
| Drawing No | Description | Revision | Scale |
| WP-V-07 | Section at Base of Cladding | | 1:2 @ A3 |
| Drawn by | Rev | Description | Date |
| SW | | | |
| | | | By |
| | | | Date |
| | | | Oct 2024 |

2 or 3mm thick Polyester Powder Coated Aluminium CGL secret fix cap flashing, secured to support sections at 500mm max centres (Consult CGL for advice on options)

Continuous Aluminium or PVC-taped Galvanised steel back-to-back angles, fixed to wallhead, forming adjustable support to cap flashing



Notes:

Joint applicable to aluminium, zinc and Copper. Depths and thickness of panels can vary.
 Factory punched slots or site oversized holes should be applied in accordance with MCRMA GD 26
 ALUMINIUM FABRICATIONS: A GUIDE TO GOOD PRACTICE.
 Non CGL components are indicative and subject to contractors project specification.

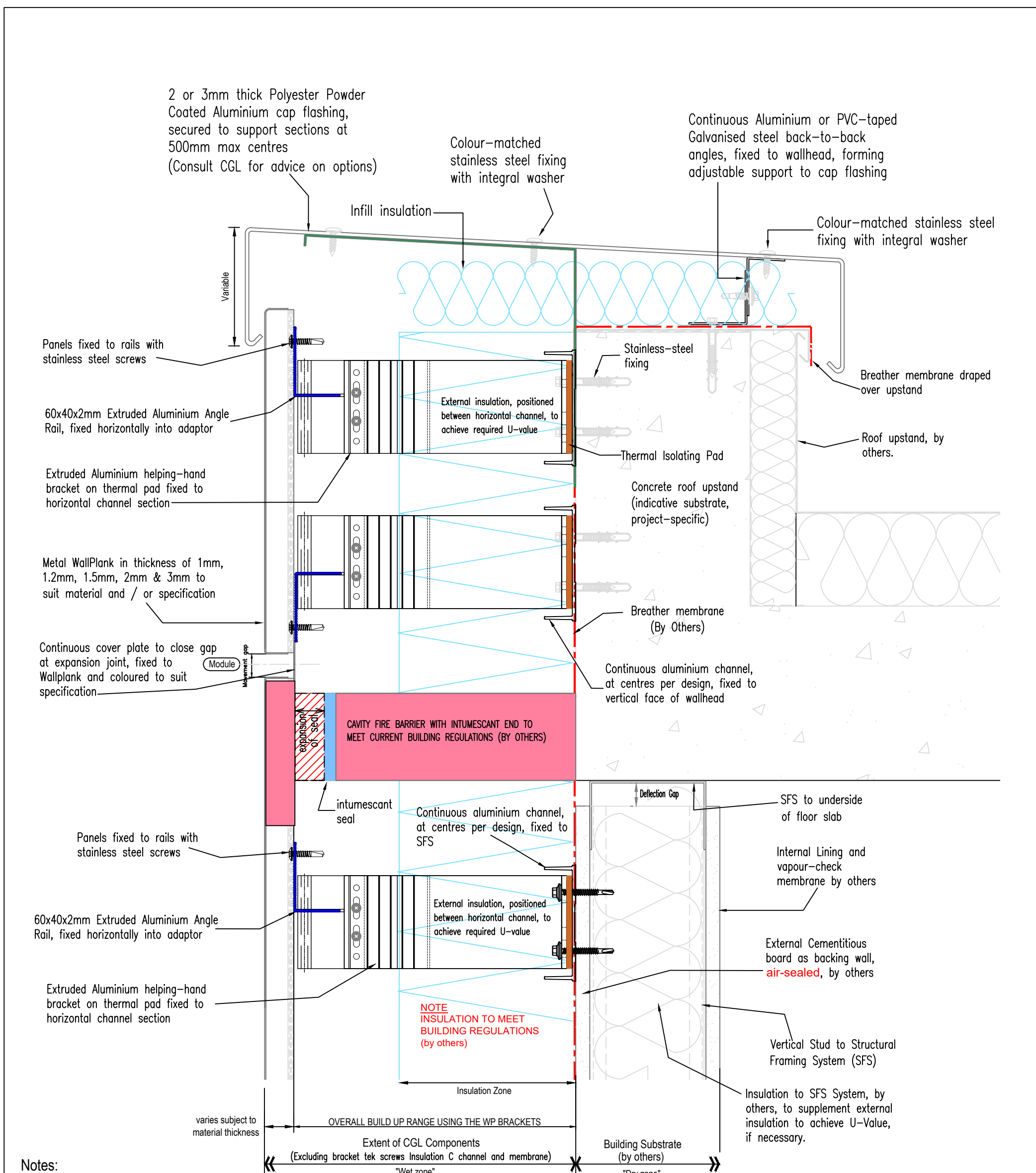


2 Young Place
 Kelvin Industrial Estate
 Glasgow
 G75 0TD

sales@cglfacades.com
 tel: 01355 243 021

System
**Rear-Ventilated Facade
 Vertical WallPlank System**

| | | | |
|------------------------------|---|-------------|-------------------|
| Drawing No WP-V-08 | Description Section at Top of Cladding Secret-Fix Capping | Revision | Scale 1:3 @ A3 |
| Drawn by SW | Rev | Description | Date |
| | | | By |
| | | | Date Oct 2024 |



Notes:

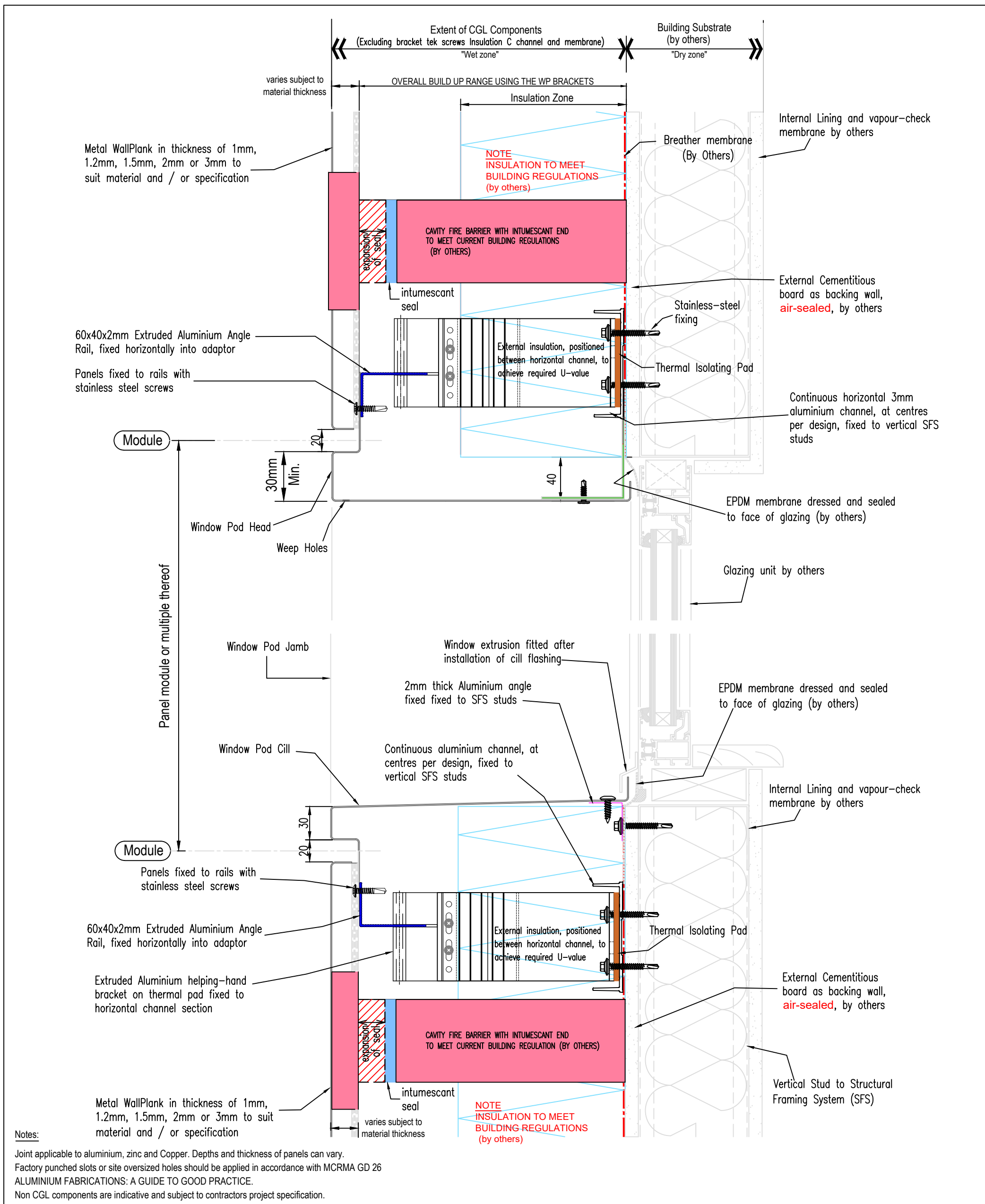
Joint applicable to aluminium, zinc and Copper. Depths and thickness of panels can vary.
 Factory punched slots or site oversized holes should be applied in accordance with MCRMA GD 26
 ALUMINIUM FABRICATIONS: A GUIDE TO GOOD PRACTICE.
 Non CGL components are indicative and subject to contractors project specification.



2 Young Place
 Kelvin Industrial Estate
 Glasgow
 G75 0TD

sales@cglfacades.com
 tel: 01355 243 021

| | | | | |
|------------|--|---|----------|----------|
| System | | Rear-Ventilated Facade Vertical WallPlank System | | |
| Drawing No | Description | Revision | Scale | |
| WP-V-08 | Section at Top of Cladding Face-Fix Capping | | 1:3 @ A3 | |
| Drawn by | Rev | Description | Date | By |
| SW | | | | |
| | | | | Date |
| | | | | Oct 2024 |

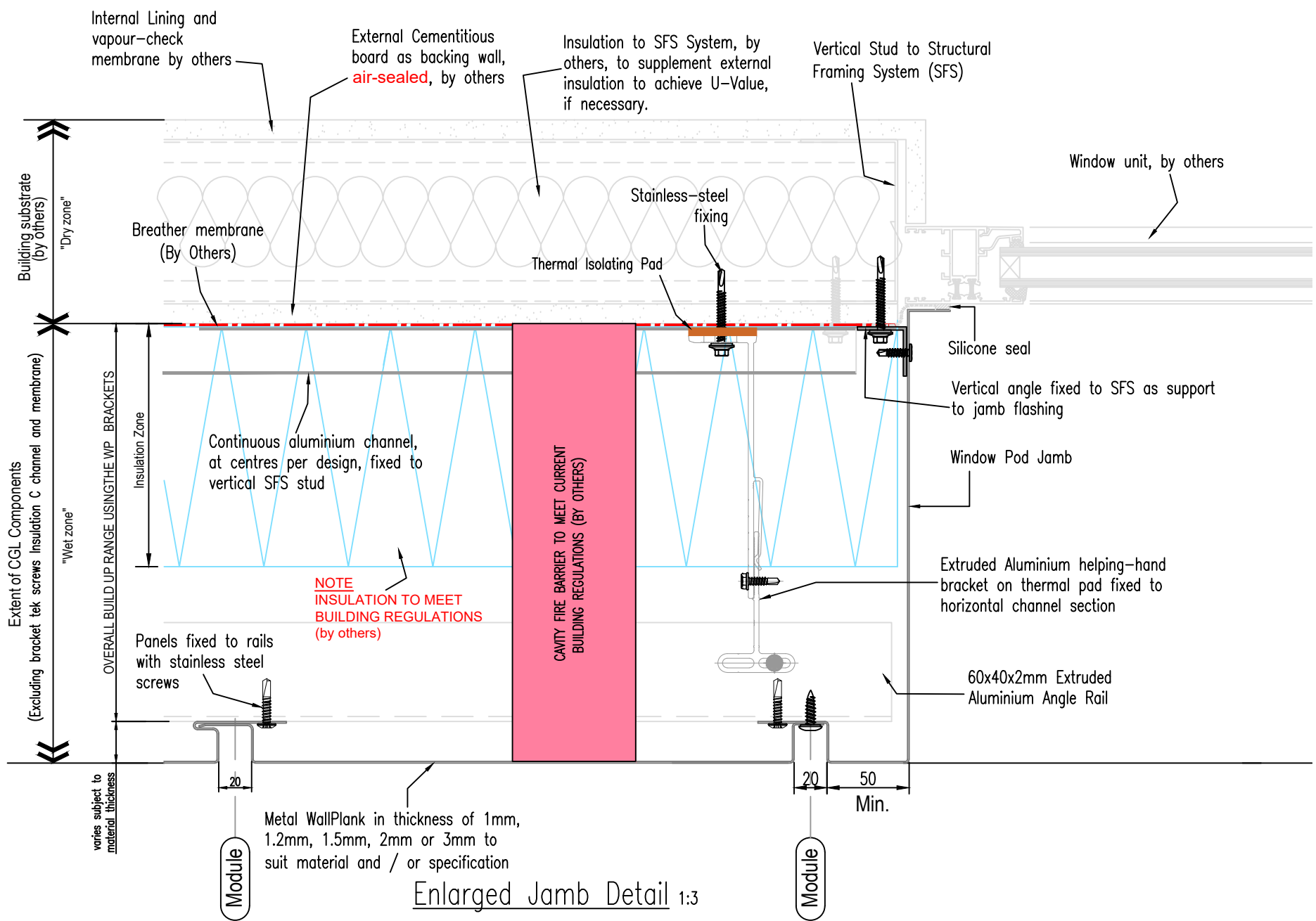
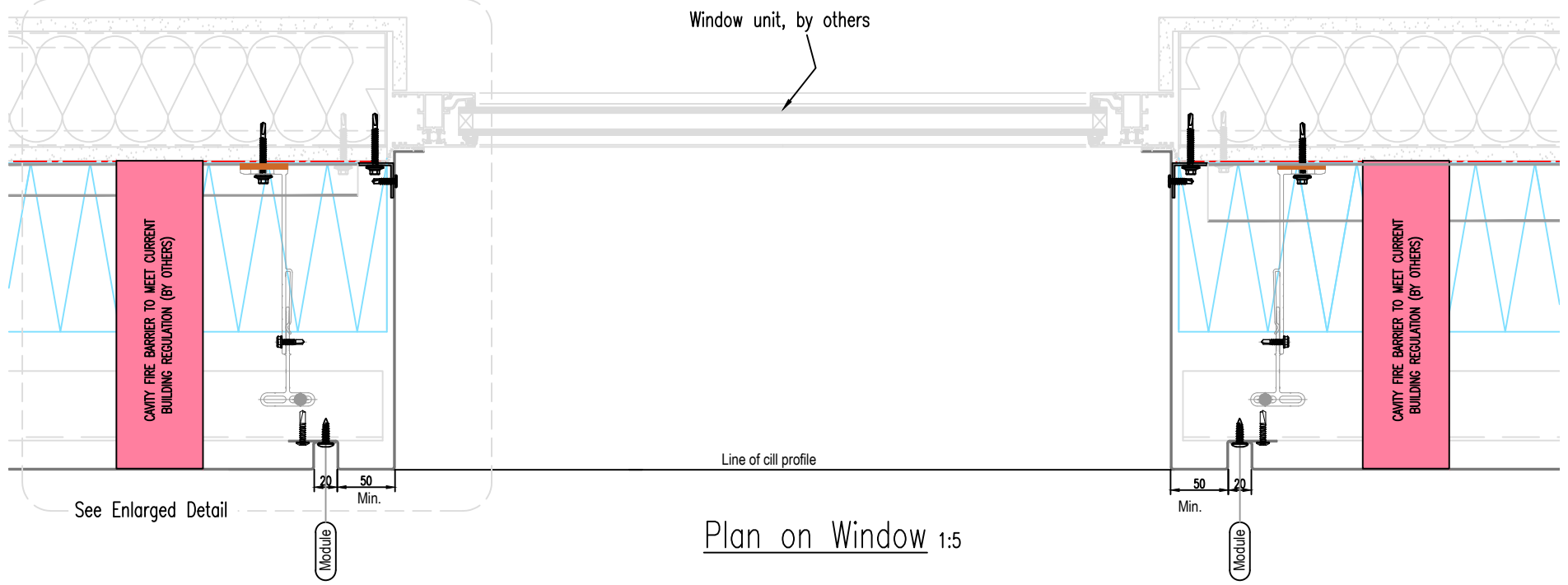


2 Young Place
Kelvin Industrial Estate
Glasgow
G75 0TD

sales@cglfacades.com
tel: 01355 243 021

System
**Rear-Ventilated Facade
Vertical WallPlank System**

| | | | |
|------------|----------------------|-------------|----------|
| Drawing No | Description | Revision | Scale |
| WP-V-09 | Section thro' Window | | 1:3 @ A3 |
| Drawn by | Rev | Description | Date |
| SW | | | Oct 2024 |



Notes:

Joint applicable to aluminium, zinc and Copper. Depths and thickness of panels can vary.
 Factory punched slots or site oversized holes should be applied in accordance with MCRMA GD 26
 ALUMINIUM FABRICATIONS: A GUIDE TO GOOD PRACTICE.
 Non CGL components are indicative and subject to contractors project specification.



2 Young Place
 Kelvin Industrial Estate
 Glasgow
 G75 0TD

sales@cglfacades.com
 tel: 01355 243 021

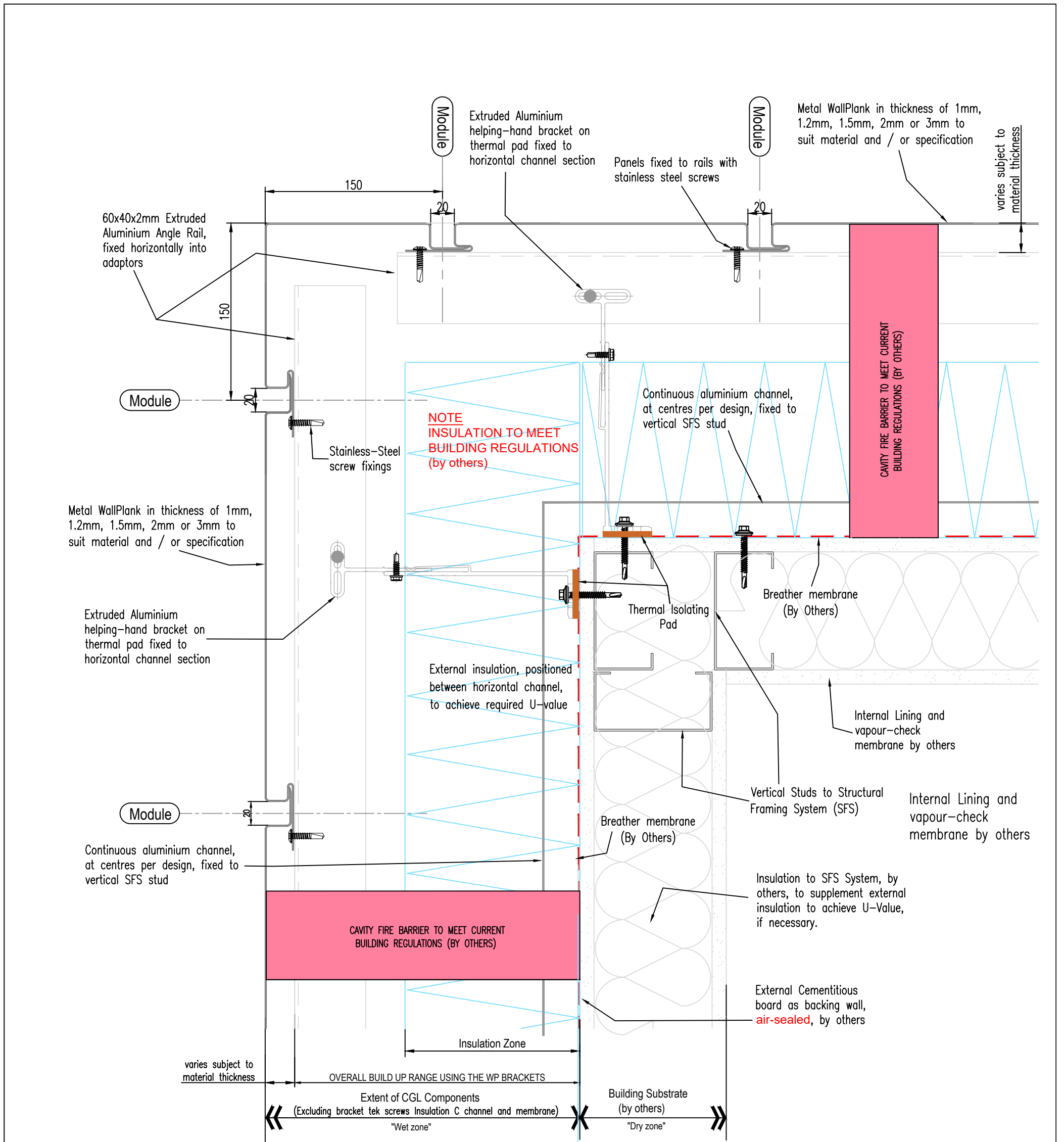
System
**Rear-Ventilated Facade
 Vertical WallPlank System**

Drawing No
WP-V-10

Description
Window Jamb Detail

Revision
 Scale
 As shown
 @ A3

| Drawn by | Rev | Description | Date | By | Date |
|----------|-----|-------------|------|----|----------|
| SW | | | | | Oct 2024 |



Notes:

Joint applicable to aluminium, zinc and Copper. Depths and thickness of panels can vary.
 Factory punched slots or site oversized holes should be applied in accordance with MCRMA GD 26
 ALUMINIUM FABRICATIONS: A GUIDE TO GOOD PRACTICE.
 Non CGL components are indicative and subject to contractors project specification.

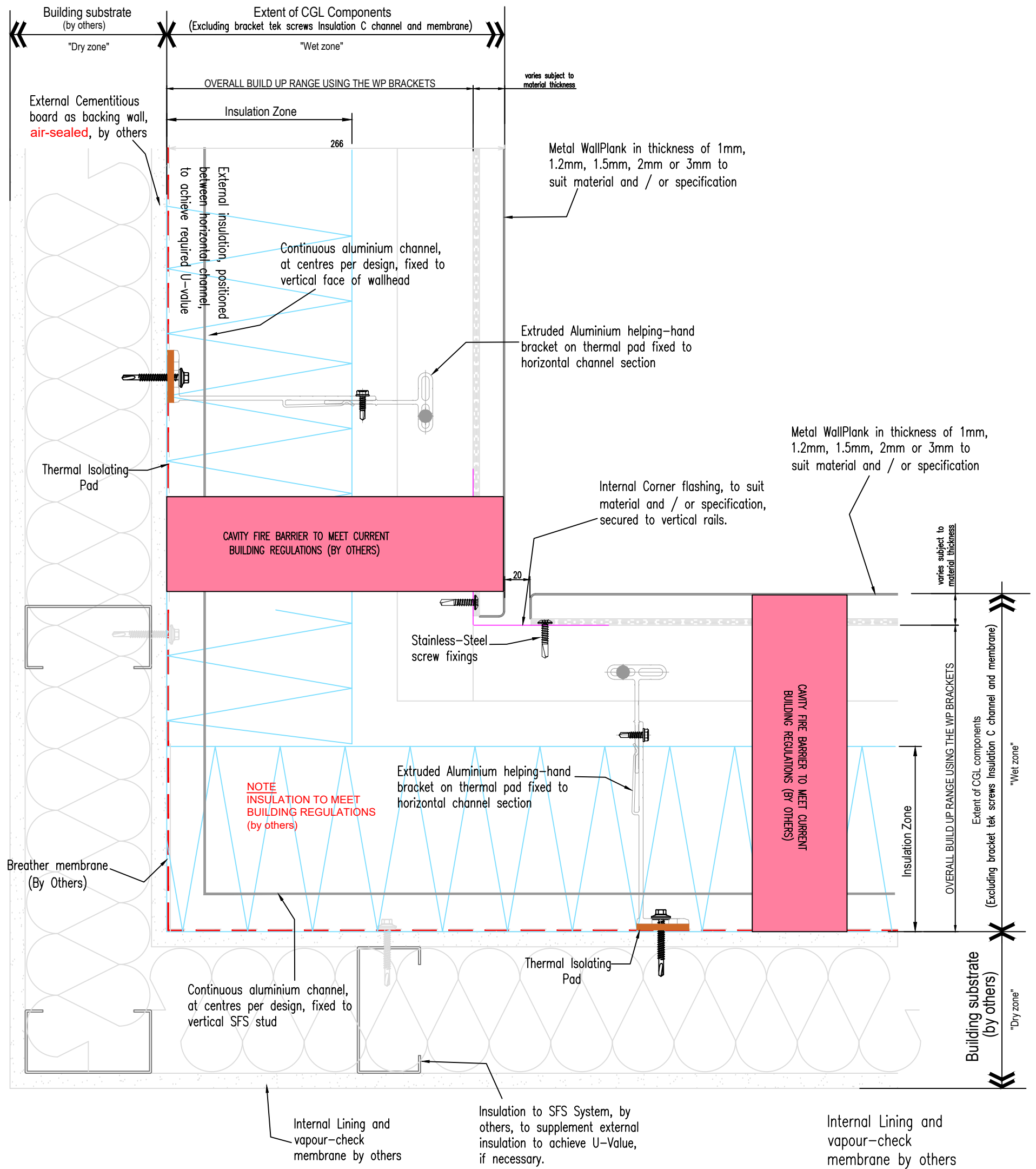


2 Young Place
 Kelvin Industrial Estate
 Glasgow
 G75 0TD

sales@cglfacades.com
 tel: 01355 243 021

System
**Rear-Ventilated Facade
 Vertical WallPlank System**

| | | | |
|------------|------------------------------|-------------|----------|
| Drawing No | Description | Revision | Scale |
| WP-V-11 | External Corner Panel Detail | | 1:3 @ A3 |
| Drawn by | Rev | Description | Date |
| SW | | | |
| | | | By |
| | | | Date |
| | | | Oct 2024 |



Notes:

Joint applicable to aluminium, zinc and Copper. Depths and thickness of panels can vary.
 Factory punched slots or site oversized holes should be applied in accordance with MCRMA GD 26
 ALUMINIUM FABRICATIONS: A GUIDE TO GOOD PRACTICE.
 Non CGL components are indicative and subject to contractors project specification.



2 Young Place
 Kelvin Industrial Estate
 Glasgow
 G75 0TD
 sales@cglfacades.com
 tel: 01355 243 021

| | | | | | |
|---|--|------------------------|--|----------|----------|
| System | | | | | |
| Rear-Ventilated Facade Vertical WallPlank System | | | | | |
| Drawing No | | Description | | Revision | Scale |
| WP-V-12 | | Internal Corner Detail | | | 1:3 @ A3 |
| Drawn by | | Rev | | Date | By |
| SW | | | | | Date |
| | | | | | Oct 2024 |